

For Research Use Only

# TNPO3 Polyclonal antibody, PBS Only

Catalog Number: 15980-1-PBS



## Basic Information

<b>Catalog Number:</b> 15980-1-PBS	<b>GenBank Accession Number:</b> BC009923	<b>Purification Method:</b> Antigen affinity purification
<b>Concentration:</b> 1 mg/ml	<b>GeneID (NCBI):</b> 23534	
<b>Source:</b> Rabbit	<b>UNIPROT ID:</b> Q9Y5LO	
<b>Isotype:</b> IgG	<b>Full Name:</b> transportin 3	
<b>Immunogen Catalog Number:</b> AG8769	<b>Calculated MW:</b> 975 aa, 110 kDa	
	<b>Observed MW:</b> 104 kDa	

## Applications

**Tested Applications:**  
WB, Indirect ELISA

**Species Specificity:**  
human, mouse

## Background Information

Transportin 3 (TNPO3) also known as IPO12, TRNSR, is a karyopherin  $\beta$  that works as a nuclear carrier shuttling, from the cytoplasm to the nucleus, the serine/arginine-rich proteins (PMID: 33452620). TNPO3 specifically mediates the nuclear import of splicing factor serine/arginine (SR) proteins, such as RBM4, SFRS1, and SFRS2, by recognizing phosphorylated SR domains (PMID: 11517331, 12628928). Mutations in TNPO3 are associated with Autosomal Dominant Limb-Girdle Muscular Dystrophy 2 (PMID: 23543484).

## Storage

**Storage:**  
Store at  $-80^{\circ}\text{C}$ .  
**The product is shipped with ice packs. Upon receipt, store it immediately at  $-80^{\circ}\text{C}$**

**Storage Buffer:**  
PBS only, pH7.3

For technical support and original validation data for this product please contact:

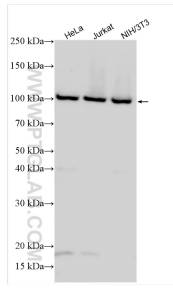
T: 4006900926

E: [Proteintech-CN@ptglab.com](mailto:Proteintech-CN@ptglab.com)

W: [ptgcn.com](http://ptgcn.com)

**This product is exclusively available under Proteintech Group brand and is not available to purchase from any other manufacturer.**

## Selected Validation Data



Various lysates were subjected to SDS PAGE followed by western blot with 15980-1-AP (TNPO3 antibody) at dilution of 1:1500 incubated at room temperature for 1.5 hours. This data was developed using the same antibody clone with 15980-1-PBS in a different storage buffer formulation.