

For Research Use Only

# CLIC3 Polyclonal antibody

Catalog Number: 15971-1-AP **3 Publications**



## Basic Information

<b>Catalog Number:</b> 15971-1-AP	<b>GenBank Accession Number:</b> BC007012	<b>Purification Method:</b> Antigen affinity purification
<b>Size:</b> 400 µg/ml	<b>GeneID (NCBI):</b> 9022	<b>Recommended Dilutions:</b> WB 1:1000-1:6000 IHC 1:50-1:500 IF 1:10-1:100
<b>Source:</b> Rabbit	<b>UNIPROT ID:</b> O95833	
<b>Isotype:</b> IgG	<b>Full Name:</b> chloride intracellular channel 3	
<b>Immunogen Catalog Number:</b> AG8757	<b>Calculated MW:</b> 236 aa, 26 kDa	
	<b>Observed MW:</b> 27-30 kDa	

## Applications

<b>Tested Applications:</b> IF/ICC, IHC, WB, ELISA	<b>Positive Controls:</b> WB : JAR cells, human placenta tissue, mouse kidney tissue, rat kidney tissue IHC : human placenta tissue, IF : MCF-7 cells,
<b>Cited Applications:</b> WB, IHC	
<b>Species Specificity:</b> human, mouse, rat	
<b>Cited Species:</b> human, rat	
<b>Note-IHC: suggested antigen retrieval with TE buffer pH 9.0; (*) Alternatively, antigen retrieval may be performed with citrate buffer pH 6.0</b>	

## Background Information

Chloride channels are a diverse group of proteins that regulate fundamental cellular processes including stabilization of cell membrane potential, transepithelial transport, maintenance of intracellular pH, and regulation of cell volume (PMID: 9880541). CLIC3 (chloride intracellular channel protein 3) belongs to the chloride channel CLIC family which has seven members based on sequence homology to the p64 chloride channels of bovine kidney microsomes. CLIC proteins lack the membrane-spanning domains characteristic of channel proteins and are largely intracellular. CLIC3 is predominantly localized in the nucleus and has a high expression level in placenta (PMID: 9880541; 17027078). It associates with the C-terminal of ERK7 and may participate in cellular growth control.

## Notable Publications

Author	Pubmed ID	Journal	Application
Liddelow Shane A SA	23843944	PLoS One	IHC
Gang Liu	32328183	J Cancer	WB
Xiaoli Zhu	37841288	Front Cell Neurosci	WB

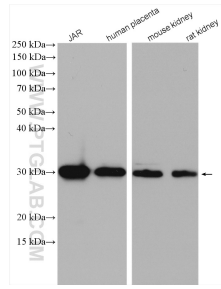
## Storage

**Storage:**  
Store at -20°C. Stable for one year after shipment.  
**Storage Buffer:**  
PBS with 0.02% sodium azide and 50% glycerol pH 7.3.  
Aliquoting is unnecessary for -20°C storage

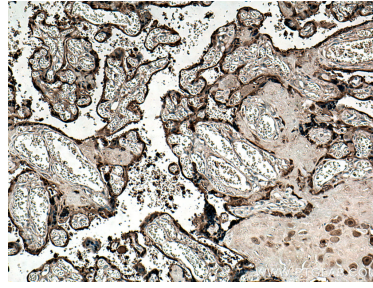
For technical support and original validation data for this product please contact:  
T: 4006900926 E: Proteintech-CN@ptglab.com W: ptgcn.com

**This product is exclusively available under Proteintech Group brand and is not available to purchase from any other manufacturer.**

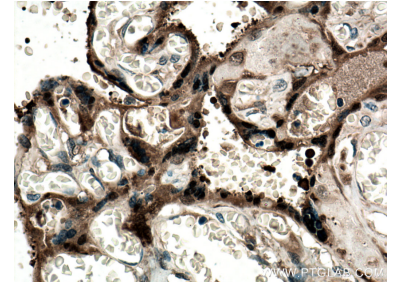
## Selected Validation Data



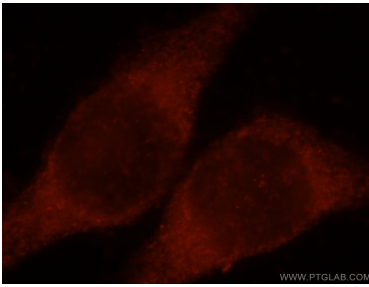
Various lysates were subjected to SDS PAGE followed by western blot with 15971-1-AP (CLIC3 antibody) at dilution of 1:3000 incubated at room temperature for 1.5 hours.



Immunohistochemical analysis of paraffin-embedded human placenta tissue slide using 15971-1-AP (CLIC3 antibody) at dilution of 1:200 (under 10x lens. Heat mediated antigen retrieval with Tris-EDTA buffer (pH 9.0)).



Immunohistochemical analysis of paraffin-embedded human placenta tissue slide using 15971-1-AP (CLIC3 antibody) at dilution of 1:200 (under 40x lens. Heat mediated antigen retrieval with Tris-EDTA buffer (pH 9.0)).



Immunofluorescent analysis of MCF-7 cells, using CLIC3 antibody 15971-1-AP at 1:25 dilution and Rhodamine-labeled goat anti-rabbit IgG (red).