

IMMP2L Polyclonal antibody

Catalog Number: 15970-1-AP

1 Publications

Basic Information

Catalog Number:

15970-1-AP

Size:

650 µg/ml

Source:

Rabbit

Isotype:

IgG

Immunogen Catalog Number:

AG8752

GenBank Accession Number:

BC008497

GeneID (NCBI):

83943

UNIPROT ID:

Q96T52

Full Name:

IMP2 inner mitochondrial membrane
peptidase-like (S. cerevisiae)

Calculated MW:

12 kDa, 20 kDa

Observed MW:

12 kDa

Purification Method:

Antigen affinity purification

Recommended Dilutions:

WB 1:1000-1:4000

IHC 1:20-1:200

Applications

Tested Applications:

IHC, WB, ELISA

Cited Applications:

WB

Species Specificity:

human, mouse, rat

Cited Species:

mouse

**Note-IHC: suggested antigen retrieval with
TE buffer pH 9.0; (*) Alternatively, antigen
retrieval may be performed with citrate
buffer pH 6.0**

Positive Controls:

WB : human kidney tissue, human heart tissue, mouse
skeletal muscle tissue

IHC : human lung cancer tissue,

Background Information

Notable Publications

Author	Pubmed ID	Journal	Application
Qing He	32652035	Endocrinology	WB

Storage

Storage:

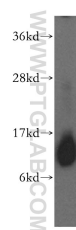
Store at -20°C. Stable for one year after shipment.

Storage Buffer:

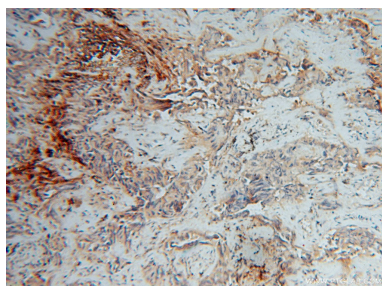
PBS with 0.02% sodium azide and 50% glycerol pH 7.3.

Aliquoting is unnecessary for -20°C storage

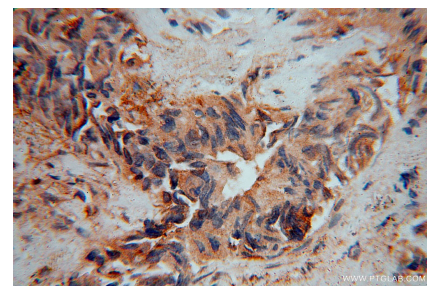
Selected Validation Data



human kidney tissue were subjected to SDS PAGE followed by western blot with 15970-1-AP (IMMP2L antibody) at dilution of 1:500 incubated at room temperature for 1.5 hours.



Immunohistochemical analysis of paraffin-embedded human lung cancer using 15970-1-AP (IMMP2L antibody) at dilution of 1:100 (under 10x lens).



Immunohistochemical analysis of paraffin-embedded human lung cancer using 15970-1-AP (IMMP2L antibody) at dilution of 1:100 (under 40x lens).