

For Research Use Only

# RILPL2 Polyclonal antibody

Catalog Number: 15955-1-AP

3 Publications



## Basic Information

Catalog Number:

15955-1-AP

Size:

450 µg/ml

Source:

Rabbit

Isotype:

IgG

Immunogen Catalog Number:

AG8704

GenBank Accession Number:

BC013042

GeneID (NCBI):

196383

UNIPROT ID:

Q969X0

Full Name:

Rab interacting lysosomal protein-like 2

Calculated MW:

211 aa, 24 kDa

Observed MW:

24-28 kDa

Purification Method:

Antigen affinity purification

Recommended Dilutions:

WB 1:1000-1:4000

## Applications

Tested Applications:

WB, ELISA

Cited Applications:

WB, IF

Species Specificity:

human, mouse, rat

Cited Species:

mouse

Positive Controls:

WB : HL-60 cells, THP-1 cells, U-937 cells

## Background Information

### Notable Publications

Author	Pubmed ID	Journal	Application
Nadine Mykicki	27797962	Sci Transl Med	IF
Maria Vamvini	39003734	Cell Rep	WB
Maria Vamvini	37905018	bioRxiv	WB

## Storage

Storage:

Store at -20°C. Stable for one year after shipment.

Storage Buffer:

PBS with 0.02% sodium azide and 50% glycerol pH 7.3.

Aliquoting is unnecessary for -20°C storage

For technical support and original validation data for this product please contact:

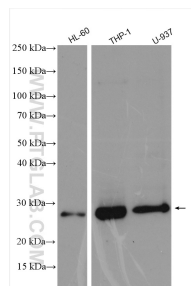
T: 4006900926

E: [Proteintech-CN@ptglab.com](mailto:Proteintech-CN@ptglab.com)

W: [ptgcn.com](http://ptgcn.com)

This product is exclusively available under Proteintech Group brand and is not available to purchase from any other manufacturer.

## Selected Validation Data



Various lysates were subjected to SDS PAGE followed by western blot with 15955-1-AP (RILPL2 antibody) at dilution of 1:2000 incubated at room temperature for 1.5 hours.