

For Research Use Only

# MAT2B Polyclonal antibody

Catalog Number: 15952-1-AP **21 Publications**



## Basic Information

**Catalog Number:**

15952-1-AP

**Size:**

800 µg/ml

**Source:**

Rabbit

**Isotype:**

IgG

**Immunogen Catalog Number:**

AG8649

**GenBank Accession Number:**

BC005218

**GeneID (NCBI):**

27430

**UNIPROT ID:**

Q9NZL9

**Full Name:**

methionine adenosyltransferase II, beta

**Calculated MW:**

36 kDa, 38 kDa

**Observed MW:**

38 kDa

**Purification Method:**

Antigen affinity purification

**Recommended Dilutions:**

WB 1:500-1:3000

IP 0.5-4.0 µg for 1.0-3.0 mg of total protein lysate

IHC 1:20-1:200

IF 1:10-1:100

## Applications

**Tested Applications:**

IF/ICC, IHC, IP, WB, ELISA

**Cited Applications:**

WB, IHC

**Species Specificity:**

human, mouse, rat

**Cited Species:**

human, chicken, rat, mouse, pig

**Note-IHC: suggested antigen retrieval with TE buffer pH 9.0; (\*) Alternatively, antigen retrieval may be performed with citrate buffer pH 6.0**

**Positive Controls:**

**WB:** HepG2 cells, HEK-293 cells, Jurkat cells, mouse brain tissue, mouse testis tissue

**IP:** HepG2 cells,

**IHC:** human lung tissue, mouse lung tissue, human kidney tissue

**IF:** HepG2 cells,

## Background Information

### Notable Publications

Author	Pubmed ID	Journal	Application
Yimin Jia	27648945	J Agric Food Chem	WB
Demin Cai	27763549	Nutrients	WB
Xi Li	25410747	Eur J Nutr	WB

## Storage

**Storage:**

Store at -20°C. Stable for one year after shipment.

**Storage Buffer:**

PBS with 0.02% sodium azide and 50% glycerol pH 7.3.

Aliquoting is unnecessary for -20°C storage

For technical support and original validation data for this product please contact:

T: 4006900926

E: Proteintech-CN@ptglab.com

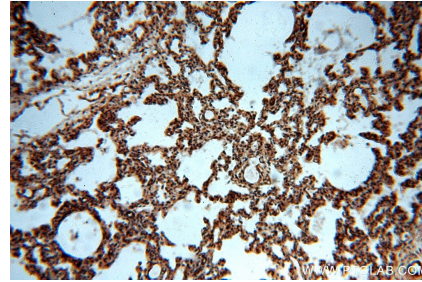
W: ptgcn.com

**This product is exclusively available under Proteintech Group brand and is not available to purchase from any other manufacturer.**

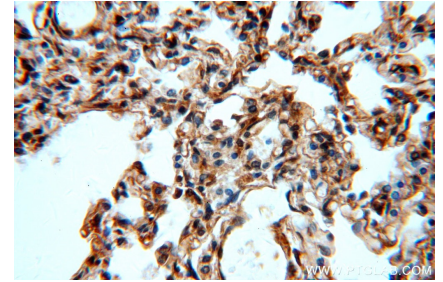
## Selected Validation Data



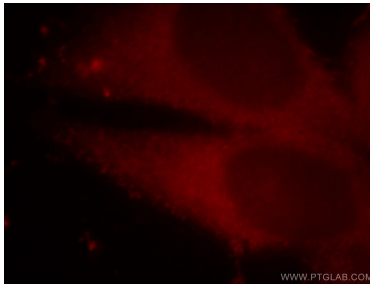
HepG2 cells were subjected to SDS PAGE followed by western blot with 15952-1-AP (MAT2B antibody) at dilution of 1:800 incubated at room temperature for 1.5 hours.



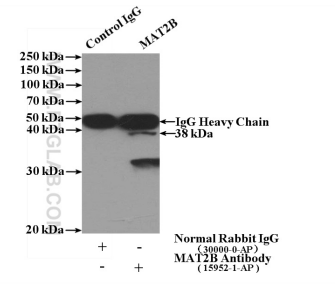
Immunohistochemical analysis of paraffin-embedded human lung using 15952-1-AP (MAT2B antibody) at dilution of 1:100 (under 10x lens).



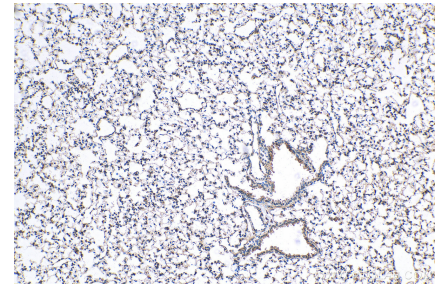
Immunohistochemical analysis of paraffin-embedded human lung using 15952-1-AP (MAT2B antibody) at dilution of 1:100 (under 40x lens).



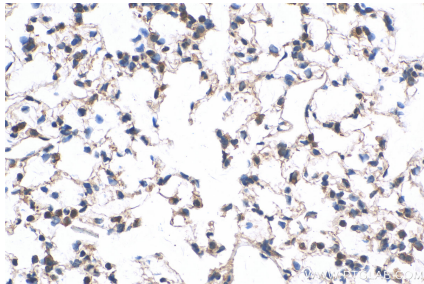
Immunofluorescent analysis of HepG2 cells, using MAT2B antibody 15952-1-AP at 1:25 dilution and Rhodamine-labeled goat anti-rabbit IgG (red).



IP result of anti-MAT2B (IP:15952-1-AP, 4ug; Detection:15952-1-AP 1:500) with HepG2 cells lysate 1000ug.



Immunohistochemical analysis of paraffin-embedded mouse lung tissue slide using 15952-1-AP (MAT2B antibody) at dilution of 1:400 (under 10x lens). Heat mediated antigen retrieval with Tris-EDTA buffer (pH 9.0).



Immunohistochemical analysis of paraffin-embedded mouse lung tissue slide using 15952-1-AP (MAT2B antibody) at dilution of 1:400 (under 40x lens). Heat mediated antigen retrieval with Tris-EDTA buffer (pH 9.0).