

For Research Use Only

UTP23 Polyclonal antibody

Catalog Number: 15950-1-AP

1 Publications



Basic Information

Catalog Number:

15950-1-AP

Concentration:

500 ug/ml

Source:

Rabbit

Isotype:

IgG

Immunogen Catalog Number:

AG8609

GenBank Accession Number:

BC005955

GeneID (NCBI):

84294

UNIPROT ID:

Q9BRU9

Full Name:

UTP23, small subunit (SSU)
processome component, homolog
(yeast)

Calculated MW:

249 aa, 28 kDa

Observed MW:

28 kDa, 17 kDa

Purification Method:

Antigen affinity purification

Recommended Dilutions:

WB 1:500-1:3000

Applications

Tested Applications:

WB, ELISA

Cited Applications:

WB, IHC

Species Specificity:

human, mouse, rat

Cited Species:

human

Positive Controls:

WB : mouse liver tissue,

Background Information

UTP23 is a component of ribosomal small-subunit processome, which is involved in ribosome synthesis and RNA maturation. UTP23 contains a long and likely unstructured tail at the C terminus of the PIN domain (PMID: 24152547). UTP23 is a target of genetic variation associated with colorectal cancer in chromosome 8q23.3, and it may coordinate with EIF3H in this region in the development of colorectal cancer. Low expression of UTP23 predicts poorer prognosis of ovarian cancer patients (PMID: 31540773, 37880005). It has 2 predicted molecular weight of 28 kDa and 17 kDa.

Notable Publications

Author	Pubmed ID	Journal	Application
Sida Zhang	37880005	Clin Breast Cancer	WB,IHC

Storage

Storage:

Store at -20°C. Stable for one year after shipment.

Storage Buffer:

PBS with 0.02% sodium azide and 50% glycerol pH 7.3.

Aliquoting is unnecessary for -20°C storage

For technical support and original validation data for this product please contact:

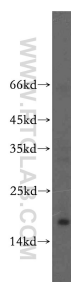
T: 4006900926

E: Proteintech-CN@ptglab.com

W: ptgcn.com

This product is exclusively available under Proteintech Group brand and is not available to purchase from any other manufacturer.

Selected Validation Data



mouse liver tissue were subjected to SDS PAGE followed by western blot with 15950-1-AP (UTP23 antibody) at dilution of 1:1000 incubated at room temperature for 1.5 hours.