

For Research Use Only

# POLR1C Polyclonal antibody

Catalog Number: 15923-1-AP

1 Publications



## Basic Information

### Catalog Number:

15923-1-AP

### Size:

700 µg/ml

### Source:

Rabbit

### Isotype:

IgG

### Immunogen Catalog Number:

AG8746

### GenBank Accession Number:

BC008863

### GeneID (NCBI):

9533

### UNIPROT ID:

O15160

### Full Name:

polymerase (RNA) I polypeptide C,  
30kDa

### Calculated MW:

346 aa, 39 kDa

### Observed MW:

39 kDa

### Purification Method:

Antigen affinity purification

### Recommended Dilutions:

WB 1:500-1:2000

IP 0.5-4.0 µg for 1.0-3.0 mg of total  
protein lysate

IHC 1:20-1:200

## Applications

### Tested Applications:

IHC, IP, WB, ELISA

### Species Specificity:

human, mouse

### Cited Species:

mouse

**Note-IHC: suggested antigen retrieval with  
TE buffer pH 9.0; (\*) Alternatively, antigen  
retrieval may be performed with citrate  
buffer pH 6.0**

### Positive Controls:

**WB**: BxPC-3 cells, HEK-293 cells, Caco-2 cells, HeLa  
cells, HepG2 cells

**IP**: NIH/3T3 cells,

**IHC**: human ovary tissue, mouse liver tissue, human  
heart tissue, human kidney tissue, human placenta  
tissue, human testis tissue, human skin tissue, human  
liver tissue, human spleen tissue

## Background Information

POLR1C is a DNA-dependent RNA polymerase which catalyzes the transcription of DNA into RNA using the four ribonucleoside triphosphates as substrates. It is a common component of RNA polymerases I and III which synthesize ribosomal RNA precursors and small RNAs, such as 5S rRNA and tRNAs, respectively. RPAC 1 is part of the Pol core element with the central large cleft and probably a clamp element that moves to open and close the cleft (By similarity).

## Notable Publications

Author	Pubmed ID	Journal	Application
Yongpeng Jiang	36443871	Genome Biol	

## Storage

### Storage:

Store at -20°C. Stable for one year after shipment.

### Storage Buffer:

PBS with 0.02% sodium azide and 50% glycerol pH 7.3.

Aliquoting is unnecessary for -20°C storage

For technical support and original validation data for this product please contact:

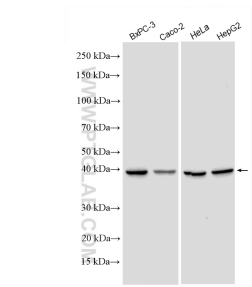
T: 4006900926

E: [Proteintech-CN@ptglab.com](mailto:Proteintech-CN@ptglab.com)

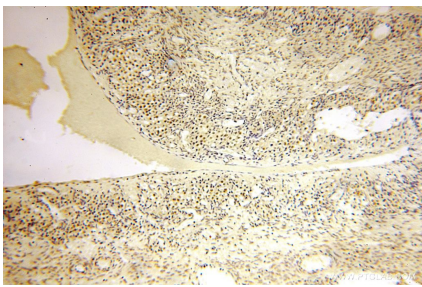
W: [ptgcn.com](http://ptgcn.com)

**This product is exclusively available under Proteintech Group brand and is not available to purchase from any other manufacturer.**

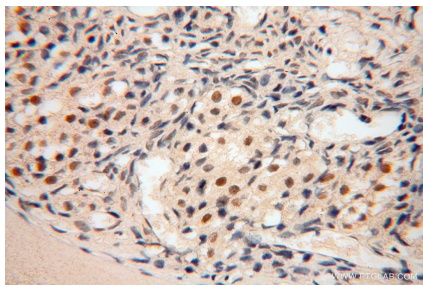
Selected Validation Data



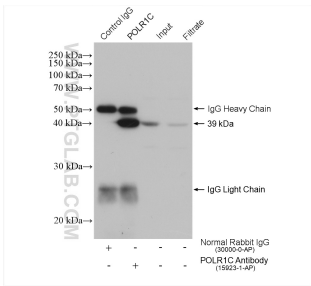
Various lysates were subjected to SDS PAGE followed by western blot with 15923-1-AP (POLR1C antibody) at dilution of 1:1000 incubated at room temperature for 1.5 hours.



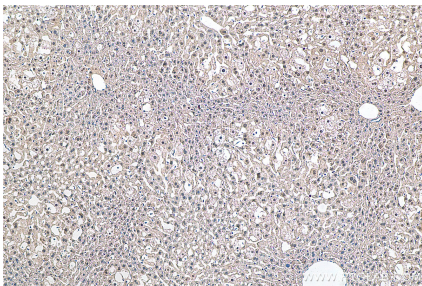
Immunohistochemical analysis of paraffin-embedded human ovary using 15923-1-AP (POLR1C antibody) at dilution of 1:200 (under 10x lens).



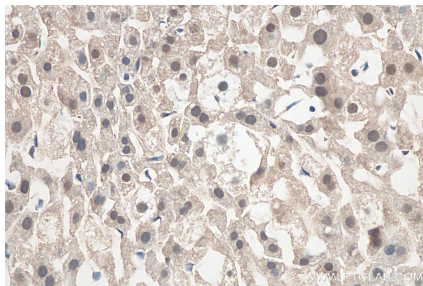
Immunohistochemical analysis of paraffin-embedded human ovary using 15923-1-AP (POLR1C antibody) at dilution of 1:200 (under 40x lens).



IP result of anti-POLR1C (IP:15923-1-AP, 4ug; Detection:15923-1-AP 1:800) with NIH/3T3 cells lysate 1600 ug.



Immunohistochemical analysis of paraffin-embedded mouse liver tissue slide using 15923-1-AP (POLR1C antibody) at dilution of 1:800 (under 10x lens). Heat mediated antigen retrieval with Tris-EDTA buffer (pH 9.0).



Immunohistochemical analysis of paraffin-embedded mouse liver tissue slide using 15923-1-AP (POLR1C antibody) at dilution of 1:800 (under 40x lens). Heat mediated antigen retrieval with Tris-EDTA buffer (pH 9.0).