

# MRPS2 Polyclonal antibody

Catalog Number: 15907-1-AP

## Basic Information

**Catalog Number:**

15907-1-AP

**Size:**

550 µg/ml

**Source:**

Rabbit

**Isotype:**

IgG

**Immunogen Catalog Number:**

AG8513

**GenBank Accession Number:**

BC008017

**GeneID (NCBI):**

51116

**UNIPROT ID:**

Q9Y399

**Full Name:**

mitochondrial ribosomal protein S2

**Calculated MW:**

296 aa, 33 kDa

**Observed MW:**

33 kDa

**Purification Method:**

Antigen affinity purification

**Recommended Dilutions:**

WB 1:1000-1:6000

IHC 1:20-1:200

## Applications

**Tested Applications:**

IHC, WB, ELISA

**Species Specificity:**

human, mouse, rat

**Note-IHC:** suggested antigen retrieval with **TE buffer pH 9.0; (\*)** Alternatively, antigen retrieval may be performed with **citrate buffer pH 6.0**

**Positive Controls:**

WB : mouse brain tissue,

IHC : human stomach tissue,

## Background Information

### Storage

**Storage:**

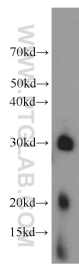
Store at -20°C. Stable for one year after shipment.

**Storage Buffer:**

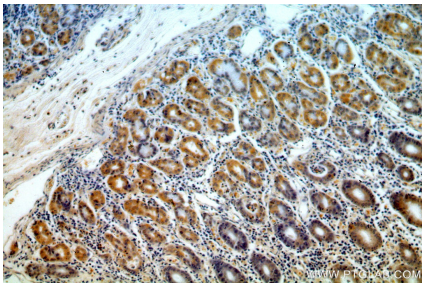
PBS with 0.02% sodium azide and 50% glycerol pH 7.3.

Aliquoting is unnecessary for -20°C storage

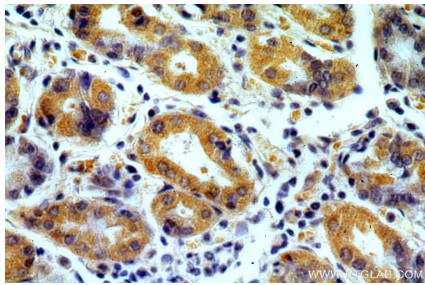
Selected Validation Data



mouse brain tissue were subjected to SDS PAGE followed by western blot with 15907-1-AP (MRPS2 antibody) at dilution of 1:3000 incubated at room temperature for 1.5 hours.



Immunohistochemical analysis of paraffin-embedded human stomach using 15907-1-AP (MRPS2 antibody) at dilution of 1:100 (under 10x lens).



Immunohistochemical analysis of paraffin-embedded human stomach using 15907-1-AP (MRPS2 antibody) at dilution of 1:100 (under 40x lens).