

For Research Use Only

SH3GLB2 Polyclonal antibody

Catalog Number: 15897-1-AP

Featured Product

2 Publications



Basic Information

Catalog Number:

15897-1-AP

Concentration:

213 ug/ml

Source:

Rabbit

Isotype:

IgG

Immunogen Catalog Number:

AG8712

GenBank Accession Number:

BC014635

GeneID (NCBI):

56904

UNIPROT ID:

Q9NR46

Full Name:

SH3-domain GRB2-like endophilin B2

Calculated MW:

395 aa, 44 kDa

Observed MW:

47-50 kDa

Purification Method:

Antigen affinity purification

Recommended Dilutions:

WB 1:500-1:2000

IP 0.5-4.0 ug for 1.0-3.0 mg of total protein lysate

IHC 1:500-1:2000

IF/ICC 1:200-1:800

Applications

Tested Applications:

WB, IHC, IF/ICC, IP, ELISA

Cited Applications:

WB, IF

Species Specificity:

human, mouse, rat

Cited Species:

human, mouse

Note-IHC: suggested antigen retrieval with TE buffer pH 9.0; (*) Alternatively, antigen retrieval may be performed with citrate buffer pH 6.0

Positive Controls:

WB : HeLa cells, human testis tissue, mouse lung tissue, mouse testis tissue, rat lung tissue

IP : HeLa cells,

IHC : mouse brain tissue, human placenta tissue

IF/ICC : HeLa cells,

Background Information

SH3GLB2 is an endophilin-related protein family with 395-amino acid protein and contains an N-terminal domain, a central coiled-coil region, and a C-terminal SH3 domain. SH3GLB2 is expressed in many tissues, including skeletal muscle, adipocytes, brain, lung, colon, and mammary gland. SH3GLB2 was expressed in the cytoplasm of transfected HeLa cells and was excluded from nuclei(PMID: 11161816).

Notable Publications

Author	Pubmed ID	Journal	Application
David B Wang	30028551	Brain Pathol	WB
Jacob M Serfass	28455444	J Biol Chem	WB,IF

Storage

Storage:

Store at -20°C. Stable for one year after shipment.

Storage Buffer:

PBS with 0.02% sodium azide and 50% glycerol pH 7.3.

Aliquoting is unnecessary for -20°C storage

For technical support and original validation data for this product please contact:

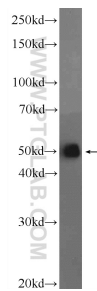
T: 4006900926

E: Proteintech-CN@ptglab.com

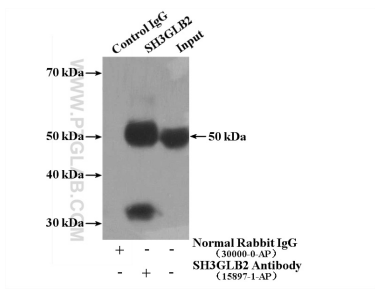
W: ptgcn.com

This product is exclusively available under Proteintech Group brand and is not available to purchase from any other manufacturer.

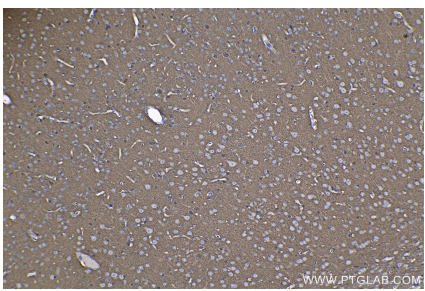
Selected Validation Data



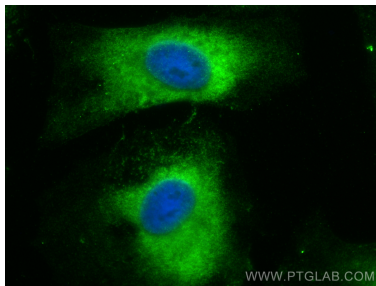
HeLa cells were subjected to SDS PAGE followed by western blot with 15897-1-AP (SH3GLB2 Antibody) at dilution of 1:1000 incubated at room temperature for 1.5 hours.



IP result of anti-SH3GLB2 (IP:15897-1-AP, 4ug; Detection:15897-1-AP 1:1000) with HeLa cells lysate 2600ug.



Immunohistochemical analysis of paraffin-embedded mouse brain tissue slide using 15897-1-AP (SH3GLB2 antibody) at dilution of 1:1000 (under 10x lens). Heat mediated antigen retrieval with Tris-EDTA buffer (pH 9.0).



Immunofluorescent analysis of (-20°C Ethanol) fixed HeLa cells using SH3GLB2 antibody (15897-1-AP) at dilution of 1:400 and CoraLite®488-Conjugated Goat Anti-Rabbit IgG(H+L) (SA00013-2).