

CKM/CKB Polyclonal antibody

Catalog Number: 15891-1-AP

3 Publications

Basic Information

Catalog Number:

15891-1-AP

Size:

350 µg/ml

Source:

Rabbit

Isotype:

IgG

Immunogen Catalog Number:

AG8678

GenBank Accession Number:

BC007462

GeneID (NCBI):

1158

UNIPROT ID:

P06732

Full Name:

creatine kinase, muscle

Calculated MW:

381 aa, 43 kDa

Observed MW:

43 kDa

Purification Method:

Antigen affinity purification

Recommended Dilutions:

WB 1:5000-1:50000

IHC 1:50-1:500

Applications

Tested Applications:

IHC, WB, ELISA

Cited Applications:

WB

Species Specificity:

human, mouse, rat

Cited Species:

human, rat

Note-IHC: suggested antigen retrieval with *TE buffer pH 9.0*; (*) Alternatively, antigen retrieval may be performed with *citrate buffer pH 6.0*

Positive Controls:

WB : mouse heart tissue, mouse brain tissue, mouse skeletal muscle tissue

IHC : mouse heart tissue, rat heart tissue

Background Information

Creatine Kinase, an enzyme important for energy metabolism in cells of high and fluctuating energy requirements, catalyses the reversible transfer of a phosphoryl group from phosphocreatine to ADP. CK isoenzymes (muscle, brain, sarcomeric, Ubiquitous-type) play a central role in energy transduction in tissues with large, fluctuating energy demands, such as skeletal muscle, heart, brain and spermatozoa. Inactivation of creatine kinase by gliotoxin was accompanied by the formation of a 37-kDa form of the enzyme. This oxidized form of creatine kinase was rapidly reconverted to the 42-kDa species by the addition of reducing agents concomitant with restoration of activity (PMID: 10827185). This antibody can recognize both CKB and CKM due to the high homology.

Notable Publications

Author	Pubmed ID	Journal	Application
Nao Tamai	32203066	Spinal Cord	WB
David W Russ	32646455	Lipids Health Dis	WB
Adel Al Fatease	31022465	Nanomedicine	WB

Storage

Storage:

Store at -20°C. Stable for one year after shipment.

Storage Buffer:

PBS with 0.02% sodium azide and 50% glycerol pH 7.3.

Aliquoting is unnecessary for -20°C storage

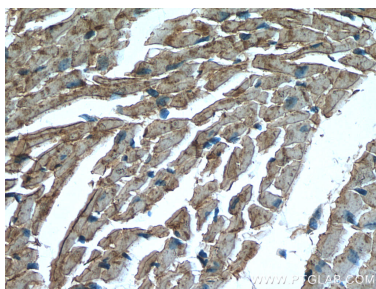
For technical support and original validation data for this product please contact:

T: 4006900926

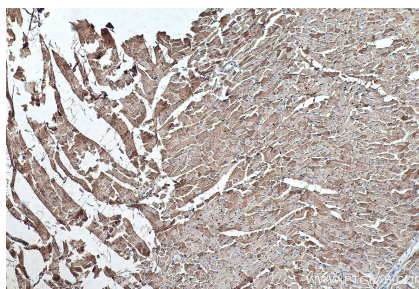
E: Proteintech-CN@ptglab.comW: ptgcn.com

This product is exclusively available under Proteintech Group brand and is not available to purchase from any other manufacturer.

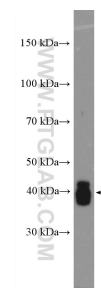
Selected Validation Data



Immunohistochemical analysis of paraffin-embedded mouse heart tissue slide using 15891-1-AP (CKM/CKB antibody) at dilution of 1:200 (under 40x lens). Heat mediated antigen retrieval with Tris-EDTA buffer (pH 9.0).



Immunohistochemical analysis of paraffin-embedded rat heart tissue slide using 15891-1-AP (CKM/CKB antibody) at dilution of 1:1000 (under 10x lens). Heat mediated antigen retrieval with Tris-EDTA buffer (pH 9.0).



mouse heart tissue were subjected to SDS PAGE followed by western blot with 15891-1-AP (Creatine Kinase antibody at dilution of 1:20000) incubated at room temperature for 1.5 hours.