

For Research Use Only

# EIF1, EIF1B Polyclonal antibody

Catalog Number: 15887-1-AP



## Basic Information

Catalog Number:

15887-1-AP

Size:

240 µg/ml

Source:

Rabbit

Isotype:

IgG

Immunogen Catalog Number:

AG8673

GenBank Accession Number:

BC006996

GeneID (NCBI):

10289

UNIPROT ID:

O60739

Full Name:

eukaryotic translation initiation factor 1B

Calculated MW:

113 aa, 13 kDa

Observed MW:

14 kDa

Purification Method:

Antigen affinity purification

Recommended Dilutions:

WB 1:200-1:1000

IHC 1:20-1:200

## Applications

Tested Applications:

IHC, WB, ELISA

Species Specificity:

human

**Note-IHC: suggested antigen retrieval with TE buffer pH 9.0; (\*) Alternatively, antigen retrieval may be performed with citrate buffer pH 6.0**

Positive Controls:

WB : L02 cells, HeLa cells, HepG2 cells

IHC : human kidney tissue,

## Background Information

### Storage

Storage:

Store at -20°C. Stable for one year after shipment.

Storage Buffer:

PBS with 0.02% sodium azide and 50% glycerol pH 7.3.

Aliquoting is unnecessary for -20°C storage

For technical support and original validation data for this product please contact:

T: 4006900926

E: [Proteintech-CN@ptglab.com](mailto:Proteintech-CN@ptglab.com)

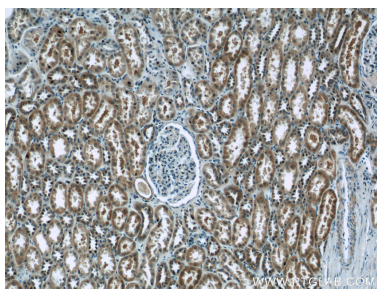
W: [ptgcn.com](http://ptgcn.com)

This product is exclusively available under Proteintech Group brand and is not available to purchase from any other manufacturer.

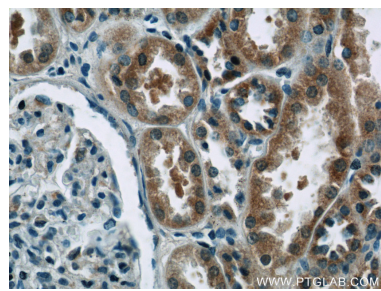
Selected Validation Data



L02 cells were subjected to SDS PAGE followed by western blot with 15887-1-AP (EIF1B antibody) at dilution of 1:300 incubated at room temperature for 1.5 hours.



Immunohistochemical analysis of paraffin-embedded human kidney tissue slide using 15887-1-AP (EIF1B Antibody) at dilution of 1:50 (under 10x lens).



Immunohistochemical analysis of paraffin-embedded human kidney tissue slide using 15887-1-AP (EIF1B Antibody) at dilution of 1:50 (under 40x lens).