

For Research Use Only

Sorbitol dehydrogenase Polyclonal antibody



Catalog Number: 15881-1-AP

Featured Product

5 Publications

Basic Information

Catalog Number:

15881-1-AP

Size:

400 µg/ml

Source:

Rabbit

Isotype:

IgG

Immunogen Catalog Number:

AG8651

GenBank Accession Number:

BC021085

GeneID (NCBI):

6652

UNIPROT ID:

Q00796

Full Name:

sorbitol dehydrogenase

Calculated MW:

357 aa, 38 kDa

Observed MW:

38 kDa

Purification Method:

Antigen affinity purification

Recommended Dilutions:

WB 1:2000-1:16000

IP 0.5-4.0 µg for 1.0-3.0 mg of total protein lysate

Applications

Tested Applications:

IP, WB, ELISA

Cited Applications:

WB, IF

Species Specificity:

human, mouse, rat

Cited Species:

rat, mouse

Positive Controls:

WB : HeLa cells, human kidney tissue, rat liver tissue, mouse liver tissue

IP : mouse liver tissue,

Background Information

SORD (Sorbitol dehydrogenase) is also named as L-iditol 2-dehydrogenase and belongs to the zinc-containing alcohol dehydrogenase family. It catalyzes the interconversion of polyols and their corresponding ketoses, and together with aldose reductase, makes up the sorbitol pathway that is believed to play an important role in the development of diabetic complications. This protein can form a homotetramer (PMID:12962626). Measurement of SORD is a specific indicator of liver cell damage and parenchymal.

Notable Publications

| Author | Pubmed ID | Journal | Application |
|---------------------|-----------|------------------|-------------|
| Yu Sun | 29349500 | J Mol Med (Berl) | WB |
| Jingbo Dai | 26647419 | Reproduction | WB,IF |
| Ana Andres-Hernando | 37892451 | Nutrients | WB |

Storage

Storage:

Store at -20°C. Stable for one year after shipment.

Storage Buffer:

PBS with 0.02% sodium azide and 50% glycerol pH 7.3.

Aliquoting is unnecessary for -20°C storage

For technical support and original validation data for this product please contact:

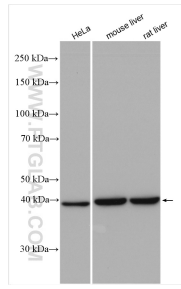
T: 4006900926

E: Proteintech-CN@ptglab.com

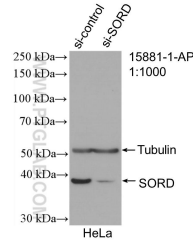
W: ptgcn.com

This product is exclusively available under Proteintech Group brand and is not available to purchase from any other manufacturer.

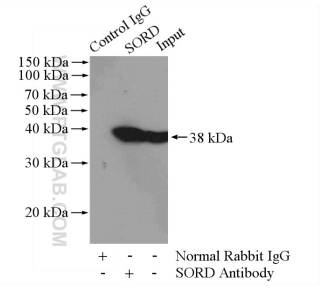
Selected Validation Data



Various lysates were subjected to SDS PAGE followed by western blot with 15881-1-AP (Sorbitol dehydrogenase antibody) at dilution of 1:8000 incubated at room temperature for 1.5 hours.



WB result of Sorbitol dehydrogenase antibody (15881-1-AP; 1:1000; incubated at room temperature for 1.5 hours) with sh-Control and sh-Sorbitol dehydrogenase transfected HeLa cells.



IP result of anti-Sorbitol dehydrogenase (IP:15881-1-AP, 4 μ g; Detection:15881-1-AP 1:1000) with mouse liver tissue lysate 4000 μ g.