

For Research Use Only

TDO2 Polyclonal antibody

Catalog Number: 15880-1-AP

Featured Product

32 Publications



Basic Information

Catalog Number:

15880-1-AP

Size:

450 µg/ml

Source:

Rabbit

Isotype:

IgG

Immunogen Catalog Number:

AG8642

GenBank Accession Number:

BC005355

GeneID (NCBI):

6999

UNIPROT ID:

P48775

Full Name:

tryptophan 2,3-dioxygenase

Calculated MW:

406 aa, 48 kDa

Observed MW:

40-50 kDa

Purification Method:

Antigen affinity purification

Recommended Dilutions:

WB 1:500-1:1000

IHC 1:100-1:400

IF 1:200-1:800

Applications

Tested Applications:

WB, IF/ICC, IHC, ELISA

Cited Applications:

WB, IF, FC, IHC

Species Specificity:

human, mouse, rat

Cited Species:

human, chicken, rat, mouse

Note-IHC: suggested antigen retrieval with TE buffer pH 9.0; (*) Alternatively, antigen retrieval may be performed with citrate buffer pH 6.0

Positive Controls:

WB : mouse liver tissue, rat liver tissue

IHC : human liver cancer tissue, human liver tissue

IF : A431 cells,

Background Information

TDO2 (tryptophan 2,3-dioxygenase), IDO1 (indoleamine 2,3-dioxygenase 1) and IDO2 are three enzymes that catalyze the amino acid tryptophan into kynurenine in the kynurenine pathway (PMID: 23090118, 28469468). TDO2 plays an important role in neurological diseases such as Alzheimer's disease, Parkinson's disease and autism. Overexpression of TDO2 promoted tumor cell survival and was correlated with tumor grade and poor prognosis in triple negative breast cancer, brain tumors and esophageal squamous cell carcinoma. TDO2 may be a potential therapeutic target in some cancers. (PMID: 21976023, 30134247)

Notable Publications

Author	Pubmed ID	Journal	Application
Susu Li	34529208	Transgenic Res	WB,IHC,FC,IF
Victoria L Wyckelsma	34573075	Antioxidants (Basel)	WB
Mizuho Sato	36325028	Int J Tryptophan Res	WB

Storage

Storage:

Store at -20°C. Stable for one year after shipment.

Storage Buffer:

PBS with 0.02% sodium azide and 50% glycerol pH 7.3.

Aliquoting is unnecessary for -20°C storage

For technical support and original validation data for this product please contact:

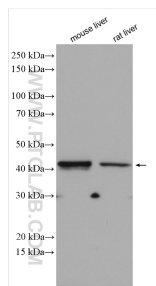
T: 4006900926

E: Proteintech-CN@ptglab.com

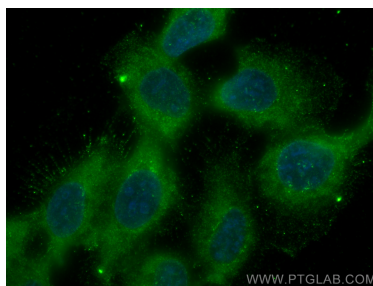
W: ptgcn.com

This product is exclusively available under Proteintech Group brand and is not available to purchase from any other manufacturer.

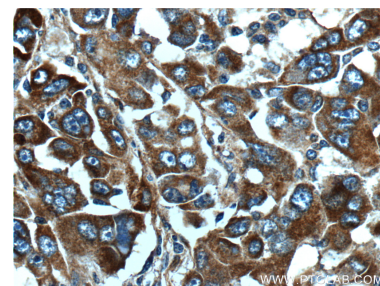
Selected Validation Data



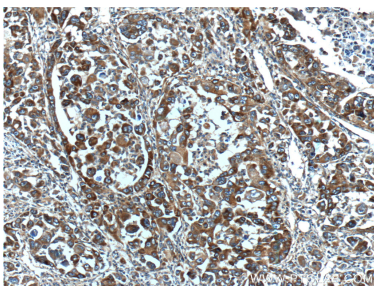
Various lysates were subjected to SDS PAGE followed by western blot with 15880-1-AP (TDO2 antibody) at dilution of 1:800 incubated at room temperature for 1.5 hours.



Immunofluorescent analysis of (-20°C Methanol) fixed A431 cells using TDO2 antibody (15880-1-AP) at dilution of 1:400 and CoraLite® 488-Conjugated AffiniPure Goat Anti-Rabbit IgG(H+L).



Immunohistochemical analysis of paraffin-embedded human liver cancer tissue slide using 15880-1-AP (TDO2 Antibody) at dilution of 1:200 (under 40x lens).



Immunohistochemical analysis of paraffin-embedded human liver cancer tissue slide using 15880-1-AP (TDO2 Antibody) at dilution of 1:200 (under 10x lens).