

For Research Use Only

Phospholamban Polyclonal antibody

Catalog Number: 15873-1-AP



Basic Information

Catalog Number:

15873-1-AP

Size:

500 ug/ml

Source:

Rabbit

Isotype:

IgG

Immunogen Catalog Number:

AG8632

GenBank Accession Number:

BC005269

GeneID (NCBI):

5350

UNIPROT ID:

P26678

Full Name:

phospholamban

Calculated MW:

52 aa, 6 kDa

Observed MW:

10 kDa, 25 kDa

Purification Method:

Antigen affinity purification

Recommended Dilutions:

WB 1:500-1:3000

IHC 1:200-1:800

Applications

Tested Applications:

WB, IHC, ELISA

Species Specificity:

human, mouse, rat

Note-IHC: suggested antigen retrieval with TE buffer pH 9.0; (*) Alternatively, antigen retrieval may be performed with citrate buffer pH 6.0

Positive Controls:

WB : mouse heart tissue, rat heart tissue

IHC : mouse heart tissue,

Background Information

Phospholamban (PLN) is a 52-amino-acid transmembrane protein found in the sarcoplasmic reticulum (SR) of cardiac muscle cells. It has been postulated to regulate the activity of the calcium pump of cardiac sarcoplasmic reticulum. Phospholamban has a homopentamer form (25-27 kDa).

Storage

Storage:

Store at -20°C. Stable for one year after shipment.

Storage Buffer:

PBS with 0.02% sodium azide and 50% glycerol pH 7.3.

Aliquoting is unnecessary for -20°C storage

For technical support and original validation data for this product please contact:

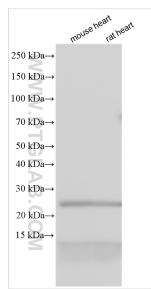
T: 4006900926

E: Proteintech-CN@ptglab.com

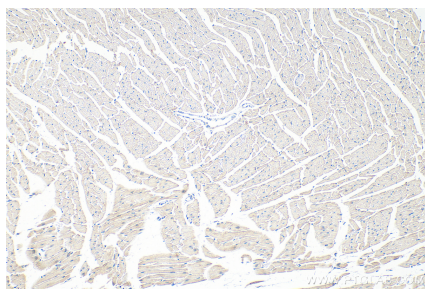
W: ptgcn.com

This product is exclusively available under Proteintech Group brand and is not available to purchase from any other manufacturer.

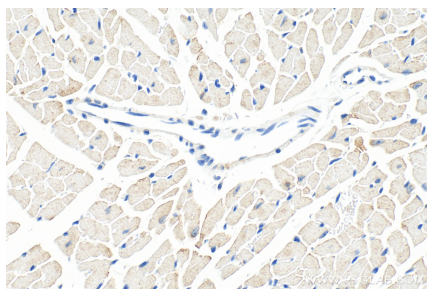
Selected Validation Data



Various lysates were subjected to SDS PAGE followed by western blot with 15873-1-AP (PLN antibody) at dilution of 1:1500 incubated at room temperature for 1.5 hours.



Immunohistochemical analysis of paraffin-embedded mouse heart tissue slide using 15873-1-AP (Phospholamban antibody) at dilution of 1:400 (under 10x lens). Heat mediated antigen retrieval with Tris-EDTA buffer (pH 9.0).



Immunohistochemical analysis of paraffin-embedded mouse heart tissue slide using 15873-1-AP (Phospholamban antibody) at dilution of 1:400 (under 40x lens). Heat mediated antigen retrieval with Tris-EDTA buffer (pH 9.0).