

For Research Use Only

# SPANXE Polyclonal antibody

Catalog Number: 15870-1-AP



## Basic Information

<b>Catalog Number:</b> 15870-1-AP	<b>GenBank Accession Number:</b> BC005382	<b>Purification Method:</b> Antigen affinity purification
<b>Size:</b> 150 µg/ml	<b>GeneID (NCBI):</b> 171489	<b>Recommended Dilutions:</b> WB 1:200-1:1000 IF 1:20-1:200
<b>Source:</b> Rabbit	<b>UNIPROT ID:</b> Q8TAD1	
<b>Isotype:</b> IgG	<b>Full Name:</b> SPANX family, member E	
<b>Immunogen Catalog Number:</b> AG8572	<b>Calculated MW:</b> 97 aa, 11 kDa	
	<b>Observed MW:</b> 15-20 kDa	

## Applications

<b>Tested Applications:</b> IF/ICC, WB, ELISA	<b>Positive Controls:</b> WB : A375 cells, mouse skin tissue IF : A375 cells,
<b>Species Specificity:</b> human, mouse	

## Background Information

SPANXE (Sperm protein associated with the nucleus on the X chromosome E), also known as SPANX A2 or SPANX C, is a member of the SPANX family. The SPANX genes encode differentially expressed testis-specific proteins that localize to various subcellular compartments. This particular gene encodes a sperm protein that contains a consensus nuclear localization signal but, although a role in spermatogenesis is suggested, the specific function of this family member has not yet been determined.

## Storage

**Storage:**  
Store at -20°C. Stable for one year after shipment.  
**Storage Buffer:**  
PBS with 0.02% sodium azide and 50% glycerol pH 7.3.  
Aliquoting is unnecessary for -20°C storage

For technical support and original validation data for this product please contact:

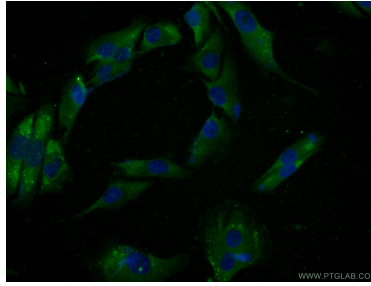
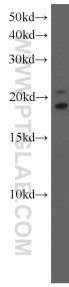
T: 4006900926

E: Proteintech-CN@ptglab.com

W: ptgcn.com

This product is exclusively available under Proteintech Group brand and is not available to purchase from any other manufacturer.

## Selected Validation Data



A375 cells were subjected to SDS PAGE followed by western blot with 15870-1-AP (SPANXE antibody) at dilution of 1:300 incubated at room temperature for 1.5 hours.

Immunofluorescent analysis of A375 cells using 15870-1-AP (SPANXE antibody) at dilution of 1:50 and Alexa Fluor 488-conjugated AffiniPure Goat Anti-Rabbit IgG(H+L).