

For Research Use Only

# HLA-DRB1 Polyclonal antibody

Catalog Number: 15862-1-AP

4 Publications



## Basic Information

### Catalog Number:

15862-1-AP

### Size:

600 ug/ml

### Source:

Rabbit

### Isotype:

IgG

### Immunogen Catalog Number:

AG8405

### GenBank Accession Number:

BC007920

### GeneID (NCBI):

3123

### UNIPROT ID:

P01911

### Full Name:

major histocompatibility complex, class II, DR beta 1

### Calculated MW:

266 aa, 30 kDa

### Observed MW:

27-30 kDa

### Purification Method:

Antigen affinity purification

### Recommended Dilutions:

WB 1:500-1:2000

IP 0.5-4.0 ug for 1.0-3.0 mg of total protein lysate

IHC 1:50-1:500

IF/ICC 1:200-1:800

## Applications

### Tested Applications:

WB, IHC, IF/ICC, IP, ELISA

### Cited Applications:

WB, IHC

### Species Specificity:

human

### Cited Species:

human, mouse

**Note-IHC: suggested antigen retrieval with TE buffer pH 9.0; (\*) Alternatively, antigen retrieval may be performed with citrate buffer pH 6.0**

### Positive Controls:

WB : Raji cells, human spleen tissue, A375 cells, Daudi cells

IP : Raji cells,

IHC : human tonsillitis tissue,

IF/ICC : Raji cells,

## Background Information

## Notable Publications

Author	Pubmed ID	Journal	Application
Rupert L Mayer	36241641	Nat Commun	WB
Qian Gao	36578425	Heliyon	WB
Yanling Wang	38694916	Front Pharmacol	IHC

## Storage

### Storage:

Store at -20°C. Stable for one year after shipment.

### Storage Buffer:

PBS with 0.02% sodium azide and 50% glycerol pH 7.3.

Aliquoting is unnecessary for -20°C storage

For technical support and original validation data for this product please contact:

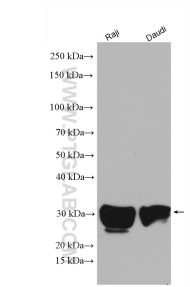
T: 4006900926

E: [Proteintech-CN@ptglab.com](mailto:Proteintech-CN@ptglab.com)

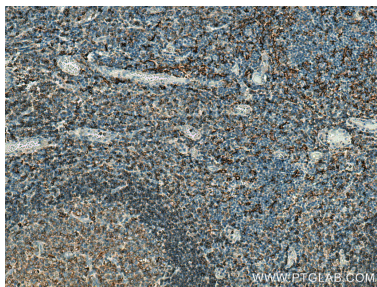
W: [ptgcn.com](http://ptgcn.com)

**This product is exclusively available under Proteintech Group brand and is not available to purchase from any other manufacturer.**

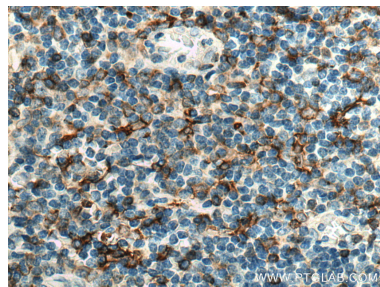
Selected Validation Data



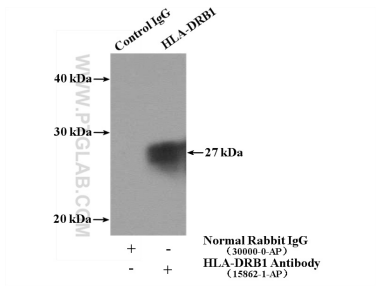
Various lysates were subjected to SDS PAGE followed by western blot with 15862-1-AP (HLA-DRB1 antibody) at dilution of 1:1000 incubated at room temperature for 1.5 hours.



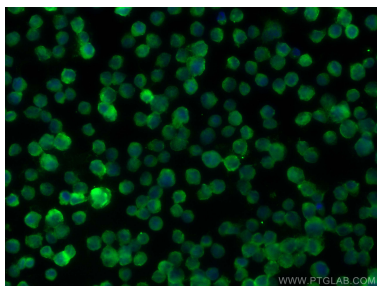
Immunohistochemical analysis of paraffin-embedded human tonsillitis tissue slide using 15862-1-AP (HLA-DRB1 antibody) at dilution of 1:200 (under 10x lens). Heat mediated antigen retrieval with Tris-EDTA buffer (pH 9.0).



Immunohistochemical analysis of paraffin-embedded human tonsillitis tissue slide using 15862-1-AP (HLA-DRB1 antibody) at dilution of 1:200 (under 40x lens). Heat mediated antigen retrieval with Tris-EDTA buffer (pH 9.0).



IP result of anti-HLA-DRB1 (IP:15862-1-AP, 4ug; Detection:15862-1-AP 1:500) with Raji cells lysate 2000ug.



Immunofluorescent analysis of (4% PFA) fixed Raji cells using HLA-DRB1 antibody (15862-1-AP) at dilution of 1:400 and CoraLite®488-Conjugated AffiniPure Goat Anti-Rabbit IgG(H+L) (SA00013-2).