

For Research Use Only

SLC25A3 Polyclonal antibody

Catalog Number: 15855-1-AP

3 Publications



Basic Information

Catalog Number:

15855-1-AP

Size:

207 µg/ml

Source:

Rabbit

Isotype:

IgG

Immunogen Catalog Number:

AG8698

GenBank Accession Number:

BC000998

GeneID (NCBI):

5250

UNIPROT ID:

Q00325

Full Name:

solute carrier family 25
(mitochondrial carrier; phosphate
carrier), member 3

Calculated MW:

40 kDa

Observed MW:

30-40 kDa

Purification Method:

Antigen affinity purification

Recommended Dilutions:

WB 1:500-1:1000

IP 0.5-4.0 µg for 1.0-3.0 mg of total
protein lysate

Applications

Tested Applications:

IP, WB, ELISA

Cited Applications:

WB, RIP

Species Specificity:

human, mouse

Cited Species:

mouse, pig

Positive Controls:

WB : mouse pancreas tissue, MCF-7 cells

IP : mouse heart tissue,

Background Information

Notable Publications

Author	Pubmed ID	Journal	Application
Jianxiong Guo	35785658	Vet Microbiol	WB, RIP
Xiaomin Zhao	35863430	J Biol Chem	WB
Baseler Walter A WA	23034391	Am J Physiol Cell Physiol	WB

Storage

Storage:

Store at -20°C. Stable for one year after shipment.

Storage Buffer:

PBS with 0.02% sodium azide and 50% glycerol pH 7.3.

Aliquoting is unnecessary for -20°C storage

For technical support and original validation data for this product please contact:

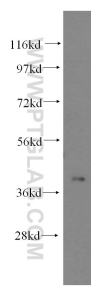
T: 4006900926

E: Proteintech-CN@ptglab.com

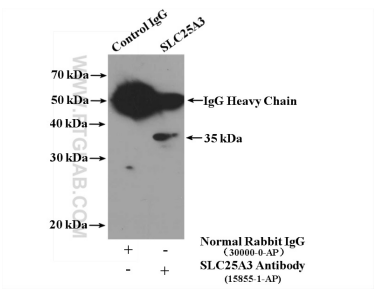
W: ptgcn.com

This product is exclusively available under Proteintech Group brand and is not available to purchase from any other manufacturer.

Selected Validation Data



mouse pancreas tissue were subjected to SDS PAGE followed by western blot with 15855-1-AP (SLC25A3 antibody) at dilution of 1:500 incubated at room temperature for 1.5 hours.



IP result of anti-SLC25A3 (IP:15855-1-AP, 4ug; Detection:15855-1-AP 1:500) with mouse heart tissue lysate 4400ug.