

PSMC6 Polyclonal antibody

Catalog Number: 15839-1-AP

4 Publications

Basic Information

Catalog Number:

15839-1-AP

Size:

500 µg/ml

Source:

Rabbit

Isotype:

IgG

Immunogen Catalog Number:

AG8589

GenBank Accession Number:

BC005390

GeneID (NCBI):

5706

UNIPROT ID:

P62333

Full Name:

proteasome (prosome, macropain)
26S subunit, ATPase, 6

Calculated MW:

389 aa, 44 kDa

Observed MW:

42 kDa

Purification Method:

Antigen affinity purification

Recommended Dilutions:

WB 1:1000-1:8000

IHC 1:250-1:1000

Applications

Tested Applications:

IHC, WB, ELISA

Cited Applications:

WB, IHC

Species Specificity:

human, mouse, rat

Cited Species:

rat, mouse

Note-IHC: suggested antigen retrieval with TE buffer pH 9.0; (*) Alternatively, antigen retrieval may be performed with citrate buffer pH 6.0

Positive Controls:

WB: mouse brain tissue, human brain tissue, human testis tissue, rat liver tissue, mouse liver tissue, rat brain tissue

IHC: human liver cancer tissue, mouse brain tissue

Background Information

PSMC6 (proteasome (prosome, macropain) 26S subunit, ATPase, 6) is also named as CADP44, MGC12520, P44, SUG2, p42 and belongs to the AAA ATPase family. It is a component of the 26S protease, which is involved in the ATP-dependent degradation of ubiquitinated proteins. The regulatory (or ATPase) complex confers ATP dependency and substrate specificity to the 26S complex. The gene encodes a 44 kDa PSMC6.

Notable Publications

Author	Pubmed ID	Journal	Application
Yi-Chao Lee	30404641	J Biomed Sci	WB
Kuixiang Chen	29435775	Cardiovasc Drugs Ther	WB
Yanting Yu	33864412	FASEB J	IHC

Storage

Storage:

Store at -20°C. Stable for one year after shipment.

Storage Buffer:

PBS with 0.02% sodium azide and 50% glycerol pH 7.3.

Aliquoting is unnecessary for -20°C storage

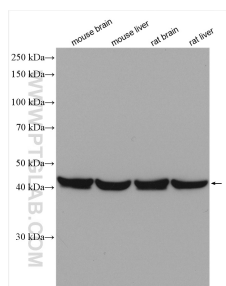
For technical support and original validation data for this product please contact:

T: 4006900926

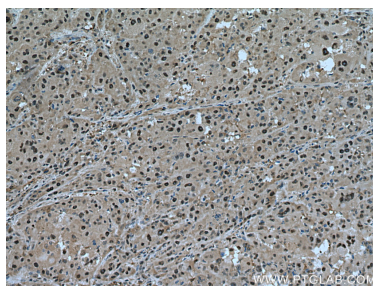
E: Proteintech-CN@ptglab.comW: ptgcn.com

This product is exclusively available under Proteintech Group brand and is not available to purchase from any other manufacturer.

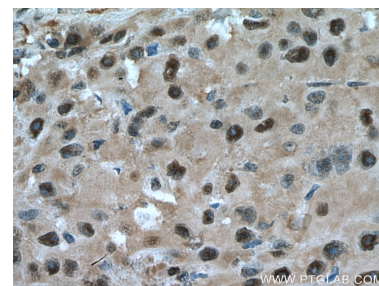
Selected Validation Data



Various lysates were subjected to SDS PAGE followed by western blot with 15839-1-AP (PSMC6 antibody) at dilution of 1:4000 incubated at room temperature for 1.5 hours.



Immunohistochemical analysis of paraffin-embedded human liver cancer tissue slide using 15839-1-AP (PSMC6 antibody) at dilution of 1:500 (under 10x lens). Heat mediated antigen retrieval with Tris-EDTA buffer (pH 9.0).



Immunohistochemical analysis of paraffin-embedded human liver cancer tissue slide using 15839-1-AP (PSMC6 antibody) at dilution of 1:500 (under 40x lens). Heat mediated antigen retrieval with Tris-EDTA buffer (pH 9.0).