

For Research Use Only

C4BPB Polyclonal antibody

Catalog Number: 15837-1-AP **2 Publications**



Basic Information

Catalog Number: 15837-1-AP	GenBank Accession Number: BC005378	Purification Method: Antigen affinity purification
Size: 450 µg/ml	GeneID (NCBI): 725	Recommended Dilutions: WB 1:500-1:1000 IHC 1:50-1:500 IF 1:50-1:500
Source: Rabbit	UNIPROT ID: P20851	
Isotype: IgG	Full Name: complement component 4 binding protein, beta	
Immunogen Catalog Number: AG8587	Calculated MW: 251 aa, 28 kDa	
	Observed MW: 45 kDa	

Applications

Tested Applications: IF/ICC, IHC, WB, ELISA	Positive Controls: WB : human plasma tissue, HeLa cells, mouse ovary tissue IHC : human liver tissue, IF : HepG2 cells,
Cited Applications: WB	
Species Specificity: human, mouse	
Cited Species: human	
Note-IHC: suggested antigen retrieval with TE buffer pH 9.0; (*) Alternatively, antigen retrieval may be performed with citrate buffer pH 6.0	

Background Information

C4b-binding protein (C4BP) is a large oligomeric glycoprotein, present in plasma at a concentration of approximately 200 mg/L (PMID: 24218259). It is the main inhibitor of the classical complement and lectin pathway. C4BP is composed of two polypeptides (alpha and beta chains), which have molecular weights of 70 and 45 kDa, respectively (PMID: 7561113). This polyclonal antibody is raised against the C4BP beta chain (C4BPB).

Notable Publications

Author	Pubmed ID	Journal	Application
Ping Zhao	30841875	BMC Cancer	WB
Wei Dong	36471393	World J Surg Oncol	WB

Storage

Storage:
Store at -20°C. Stable for one year after shipment.
Storage Buffer:
PBS with 0.02% sodium azide and 50% glycerol pH 7.3.
Aliquoting is unnecessary for -20°C storage

For technical support and original validation data for this product please contact:

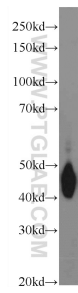
T: 4006900926

E: Proteintech-CN@ptglab.com

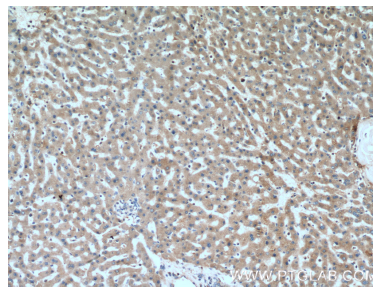
W: ptgcn.com

This product is exclusively available under Proteintech Group brand and is not available to purchase from any other manufacturer.

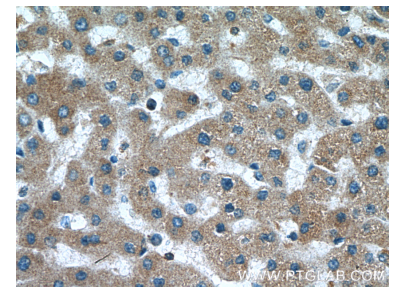
Selected Validation Data



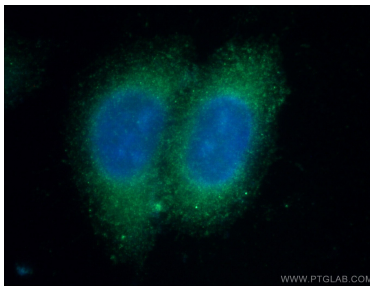
human plasma were subjected to SDS PAGE followed by western blot with 15837-1-AP (C4BPB Antibody) at dilution of 1:600 incubated at 4 degree celsius over night.



Immunohistochemical analysis of paraffin-embedded human liver tissue slide using 15837-1-AP (C4BPB Antibody) at dilution of 1:200 (under 10x lens).



Immunohistochemical analysis of paraffin-embedded human liver tissue slide using 15837-1-AP (C4BPB Antibody) at dilution of 1:200 (under 40x lens).



Immunofluorescent analysis of (-20°C Ethanol) fixed HepG2 cells using 15837-1-AP (C4BPB antibody) at dilution of 1:50 and Alexa Fluor 488-conjugated AffiniPure Goat Anti-Rabbit IgG(H+L).