

For Research Use Only

# Carboxypeptidase A1 Polyclonal antibody



Catalog Number: 15836-1-AP

5 Publications

## Basic Information

<b>Catalog Number:</b> 15836-1-AP	<b>GenBank Accession Number:</b> BC005279	<b>Purification Method:</b> Antigen affinity purification
<b>Size:</b> 450 µg/ml	<b>GeneID (NCBI):</b> 1357	<b>Recommended Dilutions:</b> WB 1:500-1:2400 IHC 1:20-1:200
<b>Source:</b> Rabbit	<b>UNIPROT ID:</b> P15085	
<b>Isotype:</b> IgG	<b>Full Name:</b> carboxypeptidase A1 (pancreatic)	
<b>Immunogen Catalog Number:</b> AG8586	<b>Calculated MW:</b> 419 aa, 47 kDa	
	<b>Observed MW:</b> 47 kDa	

## Applications

**Tested Applications:**  
IHC, WB, ELISA

**Cited Applications:**  
IF, IHC

**Species Specificity:**  
human, mouse, rat

**Cited Species:**  
rat, mouse

**Note-IHC: suggested antigen retrieval with TE buffer pH 9.0; (\*) Alternatively, antigen retrieval may be performed with citrate buffer pH 6.0**

**Positive Controls:**

**WB :** mouse pancreas tissue,

**IHC :** human placenta tissue, human kidney tissue, human liver tissue, human lung tissue, human spleen tissue

## Background Information

CPA1(Carboxypeptidase A1) is also named as CPA and belongs to the the peptidase M14 family. CPA1 is one of the genes whose expression in the pancreas and the protein which it encodes is synthesized as an inactive precursor, proCPA1, which is processed to the active enzyme by the proteolytic removal of the 95-amino acid N-terminal prodomain. The mature CPA1 is not secreted and is trapped and degraded intracellularly(PMID:8639628). This antibody is speicific to CPA1.

## Notable Publications

Author	Pubmed ID	Journal	Application
Uylissa A Rodriguez	36017799	Development	IF
Qiu Tu	30910991	Dis Model Mech	IF
Xintong Jia	33483239	Pancreatology	IF

## Storage

**Storage:**

Store at -20°C. Stable for one year after shipment.

**Storage Buffer:**

PBS with 0.02% sodium azide and 50% glycerol pH 7.3.

Aliquoting is unnecessary for -20°C storage

For technical support and original validation data for this product please contact:

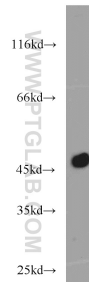
T: 4006900926

E: Proteintech-CN@ptglab.com

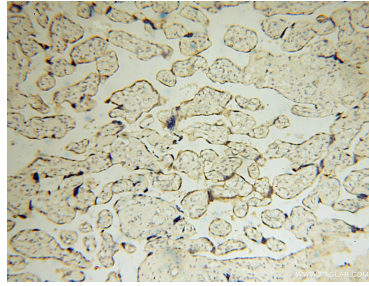
W: ptgcn.com

This product is exclusively available under Proteintech Group brand and is not available to purchase from any other manufacturer.

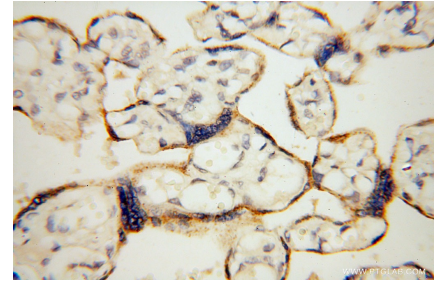
## Selected Validation Data



mouse pancreas tissue were subjected to SDS PAGE followed by western blot with 15836-1-AP (Carboxypeptidase A1 antibody) at dilution of 1:3000 incubated at room temperature for 1.5 hours.



Immunohistochemical analysis of paraffin-embedded human placenta using 15836-1-AP (Carboxypeptidase A1 antibody) at dilution of 1:100 (under 10x lens).



Immunohistochemical analysis of paraffin-embedded human placenta using 15836-1-AP (Carboxypeptidase A1 antibody) at dilution of 1:100 (under 40x lens).