

# domain-I-of-FLZ-1 Polyclonal antibody

Catalog Number: 15826-1-AP

## Basic Information

**Catalog Number:**

15826-1-AP

**Size:**

500 µg/ml

**Source:**

Rabbit

**Isotype:**

IgG

**GenBank Accession Number:**

NM\_032836

**GeneID (NCBI):**

84922

**UNIPROT ID:**

Q96SL8

**Full Name:**

FLT3-interacting zinc finger 1

**Calculated MW:**

52 kDa

**Observed MW:**

60 kDa

**Purification Method:**

Antigen affinity purification

**Recommended Dilutions:**

WB 1:500-1:1000

IHC 1:20-1:200

IF/ICC 1:10-1:100

## Applications

**Tested Applications:**

WB, IHC, IF/ICC, ELISA

**Species Specificity:**

human, mouse, rat

**Note-IHC: suggested antigen retrieval with TE buffer pH 9.0; (\*) Alternatively, antigen retrieval may be performed with citrate buffer pH 6.0**

**Positive Controls:**

WB : human kidney tissue, Y79 cells

IHC : human kidney tissue, human skeletal muscle tissue

IF/ICC : HepG2 cells,

## Background Information

### Storage

**Storage:**

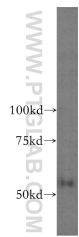
Store at -20°C. Stable for one year after shipment.

**Storage Buffer:**

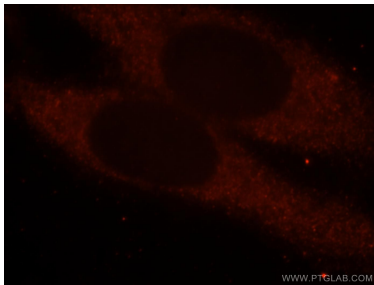
PBS with 0.02% sodium azide and 50% glycerol pH 7.3.

Aliquoting is unnecessary for -20°C storage

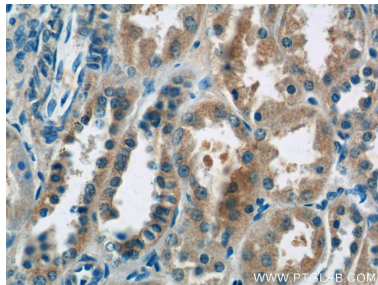
Selected Validation Data



human kidney tissue were subjected to SDS PAGE followed by western blot with 15826-1-AP (domain-I-of-FIZ-1 antibody) at dilution of 1:200 incubated at room temperature for 1.5 hours.



Immunofluorescent analysis of ( ) fixed HepG2 cells using 15826-1-AP (domain-I-of-FIZ-1 antibody) at dilution of 1:25 and Rhodamine-Goat anti-Rabbit IgG.



Immunohistochemical analysis of paraffin-embedded human kidney tissue slide using 15826-1-AP (domain-I-of-FIZ-1 Antibody) at dilution of 1:50 (under 40x lens).