

For Research Use Only

Alpha B Crystallin Polyclonal antibody, PBS Only

Catalog Number: 15808-1-PBS

Featured Product



Basic Information

Catalog Number:

15808-1-PBS

Source:

Rabbit

Isotype:

IgG

Immunogen Catalog Number:

AG8543

GenBank Accession Number:

BC007008

GeneID (NCBI):

1410

UNIPROT ID:

P02511

Full Name:

crystallin, alpha B

Calculated MW:

175 aa, 20 kDa

Observed MW:

20-22 kDa

Purification Method:

Antigen affinity purification

Applications

Tested Applications:

WB, IHC, IF/ICC, IP, Indirect ELISA

Species Specificity:

human, mouse, rat

Background Information

Alpha B-crystallin, encoded by CRYAB gene, is multifunctional, serving as both a major structural protein in the lens and a small heat-shock protein in other tissues in mammals. Alpha B-crystallin may contribute to the transparency and refractive index of the lens. Single nucleotide polymorphisms (SNPs) in the promoter region of CRYAB gene have been associated with in multiple sclerosis. Mutations in the CRYAB gene cause distinct clinical phenotypes including isolated posterior polar cataract, myofibrillar myopathy, cardiomyopathy, or a multisystemic disorder combining all these features. Impairment of alpha-B crystallin dimerization may be relevant to the pathogenesis of these disorders.

Storage

Storage:

Store at -80°C.

The product is shipped with ice packs. Upon receipt, store it immediately at -80°C

Storage Buffer:

PBS only, pH7.3

For technical support and original validation data for this product please contact:

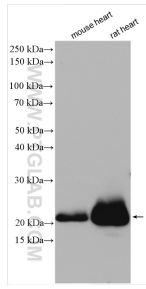
T: 4006900926

E: Proteintech-CN@ptglab.com

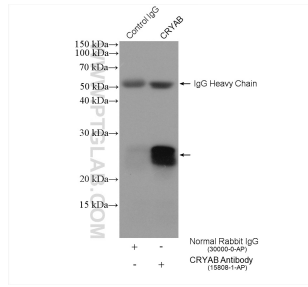
W: ptgcn.com

This product is exclusively available under Proteintech Group brand and is not available to purchase from any other manufacturer.

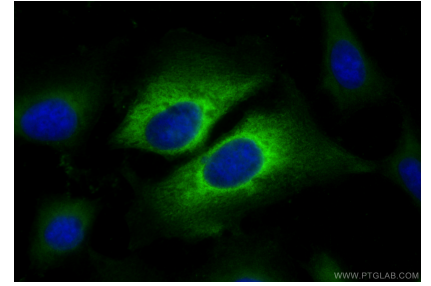
Selected Validation Data



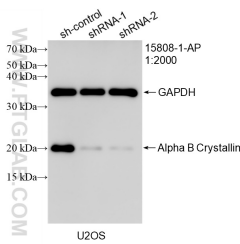
Various lysates were subjected to SDS PAGE followed by western blot with 15808-1-AP (Alpha B Crystallin antibody) at dilution of 1:5000 incubated at room temperature for 1.5 hours. This data was developed using the same antibody clone with 15808-1-PBS in a different storage buffer formulation.



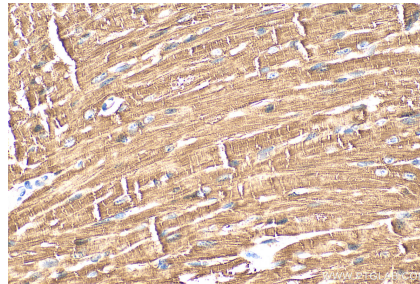
IP result of anti-Alpha B Crystallin (IP:15808-1-AP, 4ug; Detection:15808-1-AP 1:500) with U2OS cells lysate 1800 ug. This data was developed using the same antibody clone with 15808-1-PBS in a different storage buffer formulation.



Immunofluorescent analysis of (-20°C Ethanol) fixed U2OS cells using Alpha B Crystallin antibody (15808-1-AP) at dilution of 1:200 and CoraLite®488-Conjugated Goat Anti-Rabbit IgG(H+L) (SA00013-2). This data was developed using the same antibody clone with 15808-1-PBS in a different storage buffer formulation.



WB result of Alpha B Crystallin antibody (15808-1-AP; 1:2000; incubated at room temperature for 1.5 hours) with sh-Control and sh-Alpha B Crystallin transfected U2OS cells. This data was developed using the same antibody clone with 15808-1-PBS in a different storage buffer formulation.



Immunohistochemical analysis of paraffin-embedded mouse heart tissue slide using 15808-1-AP (Alpha B Crystallin antibody) at dilution of 1:200 (under 40x lens). Heat mediated antigen retrieval with Tris-EDTA buffer (pH 9.0). This data was developed using the same antibody clone with 15808-1-PBS in a different storage buffer formulation.