

GRIPAP1 Polyclonal antibody

Catalog Number: 15806-1-AP

1 Publications

Basic Information

Catalog Number:

15806-1-AP

Size:

350 µg/ml

Source:

Rabbit

Isotype:

IgG

Immunogen Catalog Number:

AG8540

GenBank Accession Number:

BC001522

GeneID (NCBI):

56850

UNIPROT ID:

Q4V328

Full Name:

GRIP1 associated protein 1

Calculated MW:

841 aa, 96 kDa

Observed MW:

97 kDa

Purification Method:

Antigen affinity purification

Recommended Dilutions:

WB 1:1000-1:8000

IHC 1:50-1:500

IF/ICC 1:200-1:800

Applications

Tested Applications:

WB, IHC, IF/ICC, ELISA

Cited Applications:

WB

Species Specificity:

human, mouse, rat

Cited Species:

human

Note-IHC: suggested antigen retrieval with TE buffer pH 9.0; (*) Alternatively, antigen retrieval may be performed with citrate buffer pH 6.0

Positive Controls:

WB : HeLa cells, SH-SY5Y cells, mouse brain tissue, rat brain tissue

IHC : mouse brain tissue,

IF/ICC : SH-SY5Y cells,

Background Information

GRIP-associated protein-1 (GRASP-1), also named as GRIPAP1, is a neuron-specific effector of the small GTPase Rab4 and key component of AMPA receptor recycling machinery in dendrites. GRASP-1 is essential for maintenance of spine morphology and important for LTP. GRASP-1 connects Rab4 and Rab11 recycling endosomal domains through the interaction with target (t)-SNARE syntaxin. The MW of this protein is 97 kDa, and Catalog#15806-1-AP specially recognises the 97 kDa protein.

Notable Publications

Author	Pubmed ID	Journal	Application
Hani Goodarzi	27259150	Cell	WB

Storage

Storage:

Store at -20°C. Stable for one year after shipment.

Storage Buffer:

PBS with 0.02% sodium azide and 50% glycerol pH 7.3.

Aliquoting is unnecessary for -20°C storage

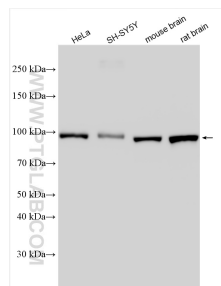
For technical support and original validation data for this product please contact:

T: 4006900926

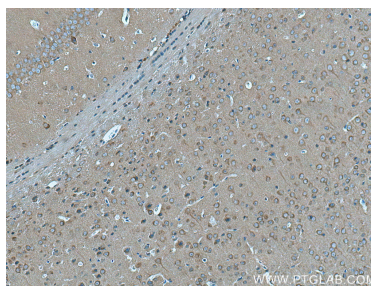
E: Proteintech-CN@ptglab.comW: ptgcn.com

This product is exclusively available under Proteintech Group brand and is not available to purchase from any other manufacturer.

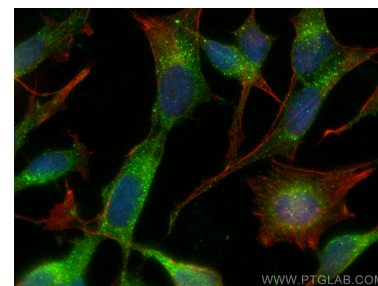
Selected Validation Data



Various lysates were subjected to SDS PAGE followed by western blot with 15806-1-AP (GRIPAP1 antibody) at dilution of 1:4000 incubated at room temperature for 1.5 hours.



Immunohistochemical analysis of paraffin-embedded mouse brain tissue slide using 15806-1-AP (GRIPAP1 antibody) at dilution of 1:200 (under 10x lens). Heat mediated antigen retrieval with Tris-EDTA buffer (pH 9.0).



Immunofluorescent analysis of (4% PFA) fixed SH-SY5Y cells using GRIPAP1 antibody (15806-1-AP) at dilution of 1:400 and CoraLite®488-Conjugated AffiniPure Goat Anti-Rabbit IgG(H+L), CL594-Phalloidin (red).