

FXYD6 Polyclonal antibody

Catalog Number: 15805-1-AP

Featured Product

3 Publications

Basic Information

Catalog Number:

15805-1-AP

Size:

550 µg/ml

Source:

Rabbit

Isotype:

IgG

Immunogen Catalog Number:

AG8538

GenBank Accession Number:

BC018652

GeneID (NCBI):

53826

UNIPROT ID:

Q9H0Q3

Full Name:

FXYD domain containing ion transport regulator 6

Calculated MW:

95 aa, 11 kDa

Observed MW:

20 kDa

Purification Method:

Antigen affinity purification

Recommended Dilutions:

WB 1:500-1:3000

IHC 1:20-1:200

Applications

Tested Applications:

WB, IHC, ELISA

Cited Applications:

WB, IF

Species Specificity:

human, mouse, rat

Cited Species:

human, mouse

Positive Controls:

WB: PC-12 cells, mouse brain tissue, human brain tissue, human testis tissue, rat brain tissue, SH-SY5Y cells

IHC: human brain tissue, human liver tissue, human ovary tissue, human skin tissue, human spleen tissue, human testis tissue

Note-IHC: suggested antigen retrieval with TE buffer pH 9.0; (*) Alternatively, antigen retrieval may be performed with citrate buffer pH 6.0

Background Information

The FXYD family is a group of small single-span transmembrane proteins characterized by a signature sequence containing an FXYD motif, two conserved glycines and a serine residue. Members of the FXYD family, including FXYD1 (phospholemmann), FXYD2 (gamma subunit of Na,K-ATPase), FXYD3 (Mat8), FXYD4 (CHIF), FXYD5 (RIC), FXYD6 (phosphohippolin) and FXYD7, are tissue specific regulators of the Na,K-ATPase. FXYD6 is primarily expressed in the brain. It modulates the kinetic activity of Na,K-ATPase and has long-term physiological importance in maintaining cation homeostasis. It may play a role in endolymph composition and has a potential important role in neuronal excitability of the CNS during postnatal development and in the adult brain. On the SDS-PAGE FXYD6 migrates with an apparent molecular weight of approximately 20 kDa, which is larger than the calculated molecular weight of 10.5 kDa (PMID: 15193427; 17209044). The gene encodes FXYD6 is located on chromosome 11q23.3, and it might be a susceptibility gene of schizophrenia.

Notable Publications

Author	Pubmed ID	Journal	Application
Wen Luo	34212047	Biomed Res Int	WB
Sébastien J Dumas	31818909	J Am Soc Nephrol	IF
Weiliang Hou	38093622	Cancer Med	WB,IF

Storage

Storage:

Store at -20°C. Stable for one year after shipment.

Storage Buffer:

PBS with 0.02% sodium azide and 50% glycerol pH 7.3.

Aliquoting is unnecessary for -20°C storage

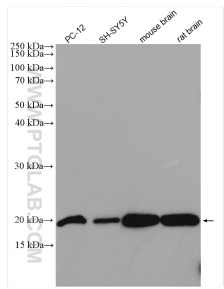
For technical support and original validation data for this product please contact:

T: 4006900926

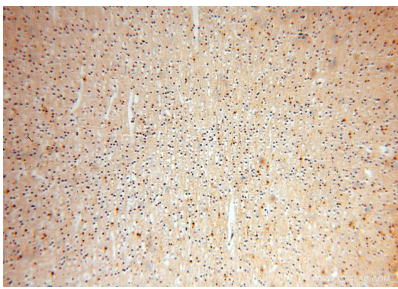
E: Proteintech-CN@ptglab.comW: ptgcn.com

This product is exclusively available under Proteintech Group brand and is not available to purchase from any other manufacturer.

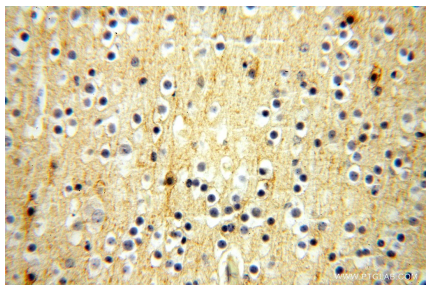
Selected Validation Data



Various lysates were subjected to SDS PAGE followed by western blot with 15805-1-AP (FXYD6 antibody) at dilution of 1:1500 incubated at room temperature for 1.5 hours.



Immunohistochemical analysis of paraffin-embedded human brain using 15805-1-AP (FXYD6 antibody) at dilution of 1:100 (under 10x lens).



Immunohistochemical analysis of paraffin-embedded human brain using 15805-1-AP (FXYD6 antibody) at dilution of 1:100 (under 40x lens).