

For Research Use Only

PIN4 Polyclonal antibody

Catalog Number: 15789-1-AP

Featured Product

1 Publications



Basic Information

Catalog Number:

15789-1-AP

Size:

450 ug/ml

Source:

Rabbit

Isotype:

IgG

Immunogen Catalog Number:

AG8489

GenBank Accession Number:

BC005234

GeneID (NCBI):

5303

UNIPROT ID:

Q9Y237

Full Name:

protein (peptidylprolyl cis/trans isomerase) NIMA-interacting, 4 (parvulin)

Calculated MW:

131 aa, 14 kDa

Observed MW:

14 kDa

Purification Method:

Antigen affinity purification

Recommended Dilutions:

WB 1:500-1:1000

IHC 1:50-1:500

IF/ICC 1:50-1:500

Applications

Tested Applications:

WB, IHC, IF/ICC, ELISA

Cited Applications:

WB

Species Specificity:

human, mouse, rat

Cited Species:

human

Note-IHC: suggested antigen retrieval with TE buffer pH 9.0; (*) Alternatively, antigen retrieval may be performed with citrate buffer pH 6.0

Positive Controls:

WB : mouse liver tissue, HeLa cells, mouse brain tissue, mouse kidney tissue

IHC : human liver cancer tissue, human kidney tissue, human liver tissue

IF/ICC : HepG2 cells,

Background Information

PIN4, also known as EPVH, hPar14, is a member of the parvulin subfamily of the peptidyl-prolyl cis/trans isomerase protein family. PIN4 is the first eukaryotic member of the parvulin family of PPIases and contains a PPIase domain preceded by a 40-amino acid glycine- and lysine-rich N-terminal sequence.

Notable Publications

Author	Pubmed ID	Journal	Application
Miki Naito	36583514	Cancer Med	WB

Storage

Storage:

Store at -20°C. Stable for one year after shipment.

Storage Buffer:

PBS with 0.02% sodium azide and 50% glycerol pH 7.3.

Aliquoting is unnecessary for -20°C storage

For technical support and original validation data for this product please contact:

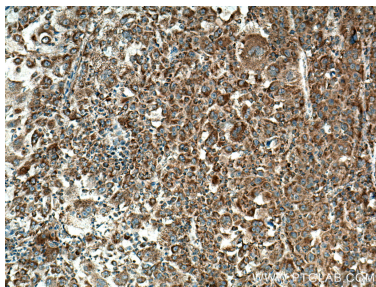
T: 4006900926

E: Proteintech-CN@ptglab.com

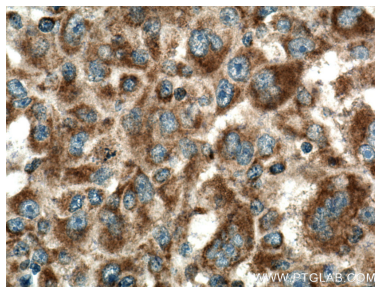
W: ptgcn.com

This product is exclusively available under Proteintech Group brand and is not available to purchase from any other manufacturer.

Selected Validation Data



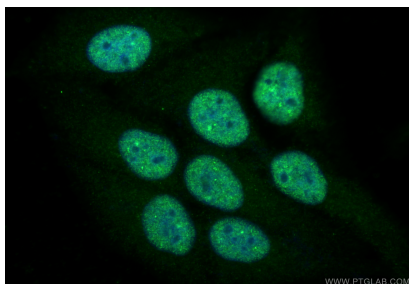
Immunohistochemical analysis of paraffin-embedded human liver cancer tissue slide using 15789-1-AP (PIN4 antibody) at dilution of 1:200 (under 10x lens). Heat mediated antigen retrieval with Tris-EDTA buffer (pH 9.0).



Immunohistochemical analysis of paraffin-embedded human liver cancer tissue slide using 15789-1-AP (PIN4 antibody) at dilution of 1:200 (under 40x lens). Heat mediated antigen retrieval with Tris-EDTA buffer (pH 9.0).



mouse liver tissue were subjected to SDS PAGE followed by western blot with 15789-1-AP (PIN4 antibody) at dilution of 1:500 incubated at room temperature for 1.5 hours.



Immunofluorescent analysis of (-20°C Ethanol) fixed HepG2 cells using PIN4 antibody (15789-1-AP) at dilution of 1:200 and Multi-rAb CoraLite® Plus 488-Goat Anti-Rabbit Recombinant Secondary Antibody (H+L) (RGAR002).