

# RBM41 Polyclonal antibody

Catalog Number: 15784-1-AP

## Basic Information

**Catalog Number:**

15784-1-AP

**Size:**

550 µg/ml

**Source:**

Rabbit

**Isotype:**

IgG

**Immunogen Catalog Number:**

AG8483

**GenBank Accession Number:**

BC006986

**GeneID (NCBI):**

55285

**UNIPROT ID:**

Q96IZ5

**Full Name:**

RNA binding motif protein 41

**Calculated MW:**

413 aa, 47 kDa

**Observed MW:**

43-47 kDa

**Purification Method:**

Antigen affinity purification

**Recommended Dilutions:**

WB 1:500-1:2000

IHC 1:20-1:200

IF/ICC 1:20-1:200

## Applications

**Tested Applications:**

IF/ICC, IHC, WB, ELISA

**Species Specificity:**

human, mouse, rat

**Note-IHC: suggested antigen retrieval with TE buffer pH 9.0; (\*) Alternatively, antigen retrieval may be performed with citrate buffer pH 6.0**

**Positive Controls:**

**WB :** HeLa cells, A549 cells, SGC-7901 cells, HepG2 cells

**IHC :** human endometrial cancer tissue,

**IF/ICC :** HepG2 cells,

## Background Information

### Storage

**Storage:**

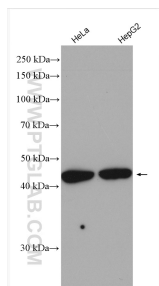
Store at -20°C. Stable for one year after shipment.

**Storage Buffer:**

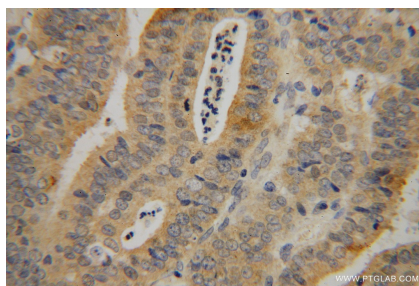
PBS with 0.02% sodium azide and 50% glycerol pH 7.3.

Aliquoting is unnecessary for -20°C storage

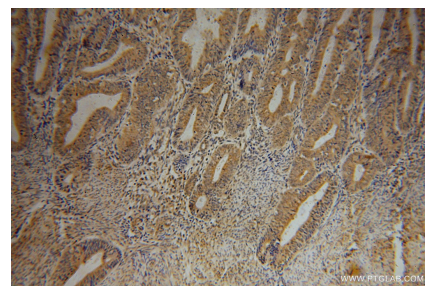
## Selected Validation Data



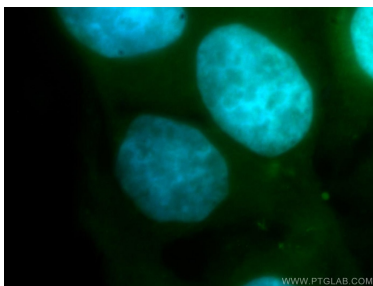
Various lysates were subjected to SDS PAGE followed by western blot with 15784-1-AP (RBM41 antibody) at dilution of 1:1000 incubated at room temperature for 1.5 hours.



Immunohistochemical analysis of paraffin-embedded human endometrial cancer using 15784-1-AP (RBM41 antibody) at dilution of 1:100 (under 40x lens).



Immunohistochemical analysis of paraffin-embedded human endometrial cancer using 15784-1-AP (RBM41 antibody) at dilution of 1:100 (under 10x lens).



Immunofluorescent analysis of HepG2 cells, using RBM41 antibody 15784-1-AP at 1:100 dilution and FITC-labeled donkey anti-rabbit IgG (green). Blue pseudocolor = DAPI (fluorescent DNA dye).