

For Research Use Only

Neudesin/NENF Polyclonal antibody

Catalog Number: 15760-1-AP



Basic Information

Catalog Number:

15760-1-AP

Size:

400 ug/ml

Source:

Rabbit

Isotype:

IgG

Immunogen Catalog Number:

AG8387

GenBank Accession Number:

BC008823

GeneID (NCBI):

29937

UNIPROT ID:

Q9UMX5

Full Name:

neuron derived neurotrophic factor

Calculated MW:

172 aa, 19 kDa

Observed MW:

19 kDa

Purification Method:

Antigen affinity purification

Recommended Dilutions:

WB 1:500-1:2000

Applications

Tested Applications:

WB, ELISA

Species Specificity:

human

Positive Controls:

WB : HCT 116 cells, HEK-293 cells, HeLa cells, MCF-7 cells

Background Information

Neudesin neurotrophic factor (NENF, also known as CIR2, SPUF, and SCIRP10) acts as a neurotrophic factor in postnatal mature neurons enhancing neuronal survival, which is localized to mitochondria and endoplasmic reticulum by PINK1 and PARK7 (PMID: 31536960). NENF in the adult brain is expected to play roles in the maintenance and protection of neurons in an autocrine/paracrine manner (PMID: 15605373). It greatly increases cAMP levels in neural precursor cells and might activate a Gs-protein-coupled receptor that could activate the MAPK, PKA, and PI-3K signal pathways (PMID: 16547973).

Storage

Storage:

Store at -20°C. Stable for one year after shipment.

Storage Buffer:

PBS with 0.02% sodium azide and 50% glycerol pH 7.3.

Aliquoting is unnecessary for -20°C storage

For technical support and original validation data for this product please contact:

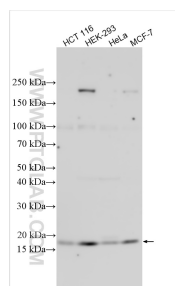
T: 4006900926

E: Proteintech-CN@ptglab.com

W: ptgcn.com

This product is exclusively available under Proteintech Group brand and is not available to purchase from any other manufacturer.

Selected Validation Data



Various lysates were subjected to SDS PAGE followed by western blot with 15760-1-AP (Neudesin/NENF antibody) at dilution of 1:1000 incubated at room temperature for 1.5 hours.