

For Research Use Only

MEK5 Polyclonal antibody

Catalog Number: 15758-1-AP **2 Publications**



Basic Information

Catalog Number: 15758-1-AP	GenBank Accession Number: BC008838	Purification Method: Antigen affinity purification
Size: 450 µg/ml	GeneID (NCBI): 5607	Recommended Dilutions: WB 1:500-1:2000 IHC 1:20-1:200 IF 1:50-1:500
Source: Rabbit	UNIPROT ID: Q13163	
Isotype: IgG	Full Name: mitogen-activated protein kinase kinase 5	
Immunogen Catalog Number: AG8351	Calculated MW: 448 aa, 50 kDa	
	Observed MW: 55 kDa	

Applications

Tested Applications: IF/ICC, IHC, WB, ELISA	Positive Controls: WB : HEK-293T cells, A431 cells, HeLa cells IHC : human heart tissue, human testis tissue IF : HeLa cells,
Cited Applications: WB	
Species Specificity: human	
Cited Species: human, rat	

Note-IHC: suggested antigen retrieval with TE buffer pH 9.0; (*) Alternatively, antigen retrieval may be performed with citrate buffer pH 6.0

Background Information

Notable Publications

Author	Pubmed ID	Journal	Application
Yongwei Nie	35244521	Pharm Biol	WB
Atsushi Enomoto	35042442	Int J Hyperthermia	WB

Storage

Storage:
Store at -20°C. Stable for one year after shipment.
Storage Buffer:
PBS with 0.02% sodium azide and 50% glycerol pH 7.3.
Aliquoting is unnecessary for -20°C storage

For technical support and original validation data for this product please contact:

T: 4006900926

E: Proteintech-CN@ptglab.com

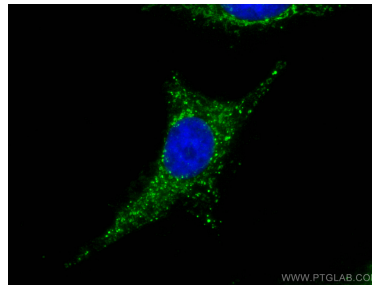
W: ptgcn.com

This product is exclusively available under Proteintech Group brand and is not available to purchase from any other manufacturer.

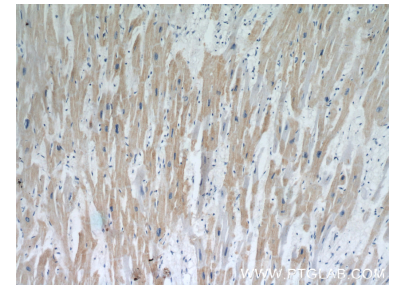
Selected Validation Data



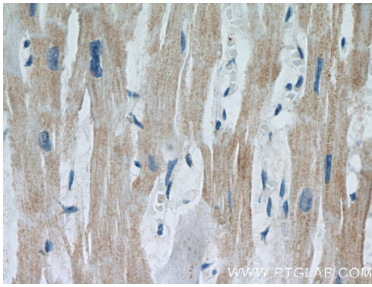
HEK-293T cells were subjected to SDS PAGE followed by western blot with 15758-1-AP (MEK5 antibody) at dilution of 1:1000 incubated at room temperature for 1.5 hours.



Immunofluorescent analysis of (4% PFA) fixed HeLa cells using MEK5 antibody (15758-1-AP) at dilution of 1:200 and CoraLite@488-Conjugated AffiniPure Goat Anti-Rabbit IgG(H+L).



Immunohistochemical analysis of paraffin-embedded human heart using 15758-1-AP (MEK5 antibody) at dilution of 1:50 (under 10x lens).



Immunohistochemical analysis of paraffin-embedded human heart using 15758-1-AP (MEK5 antibody) at dilution of 1:50 (under 40x lens).