

For Research Use Only

C1QL1 Polyclonal antibody

Catalog Number: 15757-1-AP

1 Publications



Basic Information

Catalog Number:

15757-1-AP

Concentration:

400 µg/ml

Source:

Rabbit

Isotype:

IgG

Immunogen Catalog Number:

AG8348

GenBank Accession Number:

BC008798

GeneID (NCBI):

10882

UNIPROT ID:

O75973

Full Name:

complement component 1, q subcomponent-like 1

Calculated MW:

258 aa, 26 kDa

Observed MW:

30 kDa

Purification Method:

Antigen affinity purification

Recommended Dilutions:

WB: 1:1000-1:4000

IHC: 1:50-1:500

IF-P: 1:50-1:500

Applications

Tested Applications:

WB, IHC, IF-P, ELISA

Cited Applications:

IHC

Species Specificity:

human, mouse, rat

Note-IHC: suggested antigen retrieval with TE buffer pH 9.0; (*) Alternatively, antigen retrieval may be performed with citrate buffer pH 6.0

Positive Controls:

WB: mouse brain tissue, rat brain tissue

IHC: mouse cerebellum tissue,

IF-P: mouse cerebellum tissue,

Background Information

C1QL1 (complement component 1, q subcomponent-like 1) is one of the C1q/tumor-necrosis-factor-related protein (CTRP) family members. C1QL1 is synthesized and secreted mainly by the brain and adipose tissues. It is implicated in synapse formation or elimination in cultured hippocampal neurons in vitro.

Notable Publications

Author	Pubmed ID	Journal	Application
Reiko Ikeda-Motonakano	37958336	Cancers (Basel)	IHC

Storage

Storage:

Store at -20°C. Stable for one year after shipment.

Storage Buffer:

PBS with 0.02% sodium azide and 50% glycerol, pH7.3

Aliquoting is unnecessary for -20°C storage

For technical support and original validation data for this product please contact:

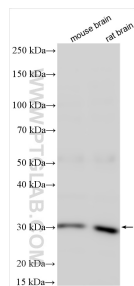
T: 4006900926

E: Proteintech-CN@ptglab.com

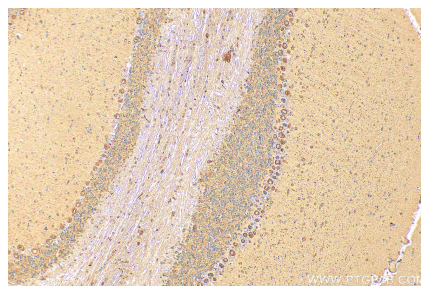
W: ptgcn.com

This product is exclusively available under Proteintech Group brand and is not available to purchase from any other manufacturer.

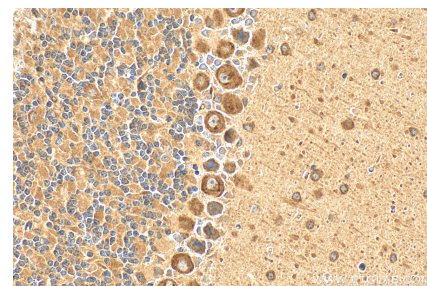
Selected Validation Data



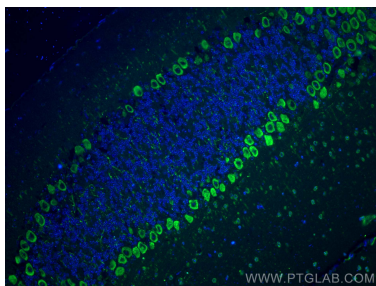
Various lysates were subjected to SDS PAGE followed by western blot with 15757-1-AP (C1QL1 antibody) at dilution of 1:2000 incubated at room temperature for 1.5 hours.



Immunohistochemical analysis of paraffin-embedded mouse cerebellum tissue slide using 15757-1-AP (C1QL1 antibody) at dilution of 1:200 (under 10x lens). Heat mediated antigen retrieval with Tris-EDTA buffer (pH 9.0).



Immunohistochemical analysis of paraffin-embedded mouse cerebellum tissue slide using 15757-1-AP (C1QL1 antibody) at dilution of 1:200 (under 40x lens). Heat mediated antigen retrieval with Tris-EDTA buffer (pH 9.0).



Immunofluorescent analysis of (4% PFA) fixed mouse cerebellum tissue using C1QL1 antibody (15757-1-AP) at dilution of 1:200 and CoraLite®488-Conjugated Goat Anti-Rabbit IgG(H+L).