

For Research Use Only

SLC7A4 Polyclonal antibody

Catalog Number: 15748-1-AP **1 Publications**



Basic Information

Catalog Number:

15748-1-AP

Size:

600 µg/ml

Source:

Rabbit

Isotype:

IgG

Immunogen Catalog Number:

AG8211

GenBank Accession Number:

BC008814

GeneID (NCBI):

6545

UNIPROT ID:

O43246

Full Name:

solute carrier family 7 (cationic amino acid transporter, y+ system), member 4

Calculated MW:

635 aa, 68 kDa

Observed MW:

68 kDa

Purification Method:

Antigen affinity purification

Recommended Dilutions:

WB 1:200-1:1000

IHC 1:50-1:500

IF 1:10-1:100

Applications

Tested Applications:

IF/ICC, IHC, WB, ELISA

Cited Applications:

IHC

Species Specificity:

human, mouse

Cited Species:

human

Note-IHC: suggested antigen retrieval with TE buffer pH 9.0; (*) Alternatively, antigen retrieval may be performed with citrate buffer pH 6.0

Positive Controls:

WB: mouse brain tissue, human liver tissue

IHC: mouse brain tissue,

IF: HeLa cells,

Background Information

Notable Publications

Author	Pubmed ID	Journal	Application
Ronghua Yang	34458265	Front Cell Dev Biol	IHC

Storage

Storage:

Store at -20°C. Stable for one year after shipment.

Storage Buffer:

PBS with 0.02% sodium azide and 50% glycerol pH 7.3.

Aliquoting is unnecessary for -20°C storage

For technical support and original validation data for this product please contact:

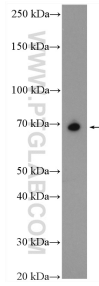
T: 4006900926

E: Proteintech-CN@ptglab.com

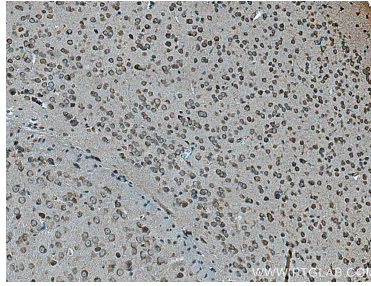
W: ptgcn.com

This product is exclusively available under Proteintech Group brand and is not available to purchase from any other manufacturer.

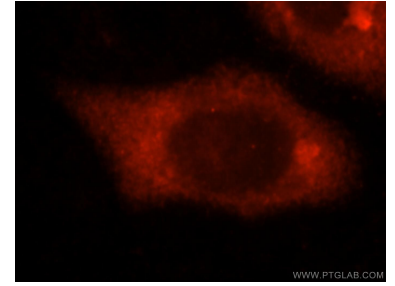
Selected Validation Data



mouse brain tissue were subjected to SDS PAGE followed by western blot with 15748-1-AP (SLC7A4 antibody) at dilution of 1:300 incubated at room temperature for 1.5 hours.



Immunohistochemical analysis of paraffin-embedded mouse brain tissue slide using 15748-1-AP (SLC7A4 antibody) at dilution of 1:200 (under 10x lens). Heat mediated antigen retrieval with Tris-EDTA buffer (pH 9.0).



Immunofluorescent analysis of HeLa cells, using SLC7A4 antibody 15748-1-AP at 1:25 dilution and Rhodamine-labeled goat anti-rabbit IgG (red).