

For Research Use Only

ALDH3B2 Polyclonal antibody

Catalog Number: 15746-1-AP

Featured Product

3 Publications



Basic Information

Catalog Number:

15746-1-AP

Size:

1000 ug/ml

Source:

Rabbit

Isotype:

IgG

Immunogen Catalog Number:

AG8197

GenBank Accession Number:

BC007685

GeneID (NCBI):

222

UNIPROT ID:

P48448

Full Name:

aldehyde dehydrogenase 3 family, member B2

Calculated MW:

395 aa, 43 kDa

Observed MW:

43 kDa

Purification Method:

Antigen affinity purification

Recommended Dilutions:

WB 1:500-1:2000

IHC 1:20-1:200

IF/ICC 1:200-1:800

Applications

Tested Applications:

WB, IHC, IF/ICC, ELISA

Cited Applications:

WB, IHC

Species Specificity:

human, mouse, rat

Cited Species:

human

Note-IHC: suggested antigen retrieval with TE buffer pH 9.0; (*) Alternatively, antigen retrieval may be performed with citrate buffer pH 6.0

Positive Controls:

WB : mouse lung tissue, BxPC-3 cells, HepG2 cells

IHC : human adrenal gland tissue,

IF/ICC : HeLa cells,

Background Information

ALDH3B2(aldehyde dehydrogenase family 3 member B2) is also named as ALDH8(aldehyde dehydrogenase 8) and belongs to the aldehyde dehydrogenase family. The ALDH3B2 gene contains an in-frame stop codon at the seventeenth codon position from the first methionine, suggesting that ALDH3B2 may be a pseudogene(PMID:15237855) and encodes the human salivary gland and placental ALDH(PMID: 22206977). This protein shares 83% sequence identity with ALDH3B1(PMID:18611112).

Notable Publications

Author	Pubmed ID	Journal	Application
Yue Wang	34907179	Cell Death Dis	WB,IHC
Rafael Jiménez	39519068	Int J Mol Sci	WB
	38769389		WB

Storage

Storage:

Store at -20°C. Stable for one year after shipment.

Storage Buffer:

PBS with 0.02% sodium azide and 50% glycerol pH 7.3.

Aliquoting is unnecessary for -20°C storage

For technical support and original validation data for this product please contact:

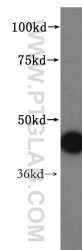
T: 4006900926

E: Proteintech-CN@ptglab.com

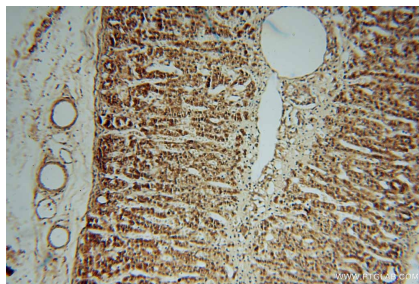
W: ptgcn.com

This product is exclusively available under Proteintech Group brand and is not available to purchase from any other manufacturer.

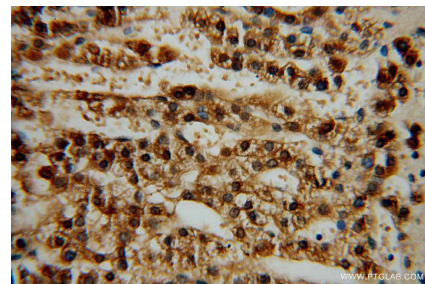
Selected Validation Data



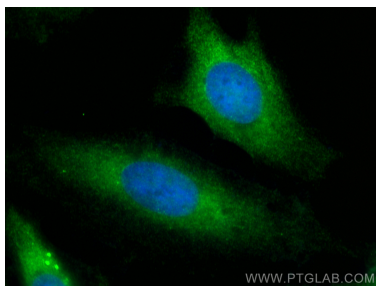
mouse lung tissue were subjected to SDS PAGE followed by western blot with 15746-1-AP (ALDH3B2 antibody) at dilution of 1:500 incubated at room temperature for 1.5 hours.



Immunohistochemical analysis of paraffin-embedded human adrenal gland using 15746-1-AP (ALDH3B2 antibody) at dilution of 1:50 (under 10x lens).



Immunohistochemical analysis of paraffin-embedded human adrenal gland using 15746-1-AP (ALDH3B2 antibody) at dilution of 1:50 (under 40x lens).



Immunofluorescent analysis of (-20°C Ethanol) fixed HeLa cells using ALDH3B2 antibody (15746-1-AP) at dilution of 1:400 and CoraLite®488-Conjugated Goat Anti-Rabbit IgG(H+L) (SA00013-2).