

For Research Use Only

CLPB Polyclonal antibody

Catalog Number: 15743-1-AP **4 Publications**



Basic Information

Catalog Number: 15743-1-AP	GenBank Accession Number: BC006404	Purification Method: Antigen affinity purification
Size: 650 µg/ml	GeneID (NCBI): 81570	Recommended Dilutions: WB 1:500-1:2000 IHC 1:100-1:400 IF 1:200-1:800
Source: Rabbit	UNIPROT ID: Q9H078	
Isotype: IgG	Full Name: ClpB caseinolytic peptidase B homolog (E. coli)	
Immunogen Catalog Number: AG8165	Calculated MW: 707 aa, 79 kDa	
	Observed MW: 58 kDa	

Applications

Tested Applications: IF, IHC, WB, ELISA	Positive Controls:
Cited Applications: WB	WB: COLO 320 cells, HeLa cells, Jurkat cells, K-562 cells
Species Specificity: human, mouse, rat	IHC: human heart tissue,
Cited Species: human, mouse	IF: HeLa cells,
Note-IHC: suggested antigen retrieval with TE buffer pH 9.0; (*) Alternatively, antigen retrieval may be performed with citrate buffer pH 6.0	

Background Information

CLPB encodes a protein of 707 aa with a predicted molecular mass of approximately 79 kDa, presenting two conserved ATP-binding domains. CLPB is a member of the AAA+ protein family. This potential internal translation initiation site suggests that a smaller form of ClpB, with a theoretical molecular mass of approximately 58 kDa, may be produced. (PMID: 25597510, PMID: 255957260)

Notable Publications

Author	Pubmed ID	Journal	Application
Takahiro Yoshinaka	31522117	iScience	WB
Ryan R Cupo	32573439	Elife	WB
Enrico Radaelli	37505079	Elife	WB

Storage

Storage:
Store at -20°C. Stable for one year after shipment.
Storage Buffer:
PBS with 0.02% sodium azide and 50% glycerol pH 7.3.
Aliquoting is unnecessary for -20°C storage

For technical support and original validation data for this product please contact:

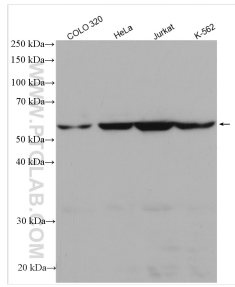
T: 4006900926

E: Proteintech-CN@ptglab.com

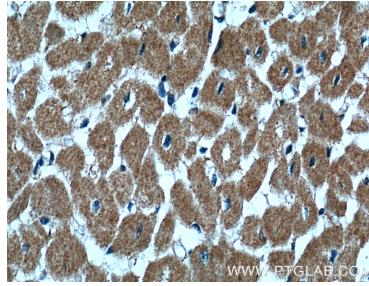
W: ptgcn.com

This product is exclusively available under Proteintech Group brand and is not available to purchase from any other manufacturer.

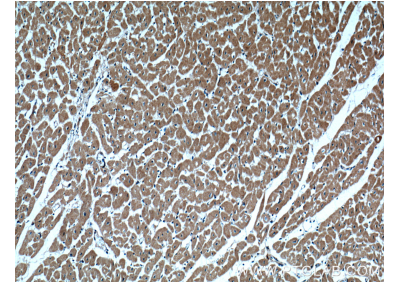
Selected Validation Data



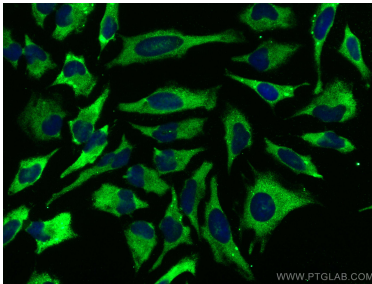
Various lysates were subjected to SDS PAGE followed by western blot with 15743-1-AP (CLPB antibody) at dilution of 1:1000 incubated at room temperature for 1.5 hours.



Immunohistochemical analysis of paraffin-embedded human heart tissue slide using 15743-1-AP (CLPB Antibody) at dilution of 1:200 (under 40x lens).



Immunohistochemical analysis of paraffin-embedded human heart tissue slide using 15743-1-AP (CLPB Antibody) at dilution of 1:200 (under 10x lens).



Immunofluorescent analysis of (-20°C Methanol) fixed HeLa cells using CLPB antibody (15743-1-AP) at dilution of 1:400 and CoraLite®488-Conjugated AffiniPure Goat Anti-Rabbit IgG(H+L).