

# AP2A2 Polyclonal antibody

Catalog Number: 15722-1-AP

1 Publications

## Basic Information

Catalog Number:

15722-1-AP

Size:

300 µg/ml

Source:

Rabbit

Isotype:

IgG

Immunogen Catalog Number:

AG8442

GenBank Accession Number:

BC006155

GeneID (NCBI):

161

UNIPROT ID:

O94973

Full Name:

adaptor-related protein complex 2,  
alpha 2 subunit

Calculated MW:

939 aa, 104 kDa

Observed MW:

104 kDa

Purification Method:

Antigen affinity purification

Recommended Dilutions:

WB 1:200-1:1000

IHC 1:20-1:200

## Applications

Tested Applications:

IHC, WB, ELISA

Cited Applications:

WB

Species Specificity:

human, mouse, rat

Cited Species:

pig

**Note-IHC: suggested antigen retrieval with  
TE buffer pH 9.0; (\*) Alternatively, antigen  
retrieval may be performed with citrate  
buffer pH 6.0**

Positive Controls:

WB : mouse brain tissue, rat brain tissue

IHC : human testis tissue,

## Background Information

AP2A2, also named as ADTAB, CLAPA2, HIP9, HYPJ, or KIAA0899, is a 939 amino acid protein, which belongs to the adaptor complexes large subunit family. AP2A2 localizes in the membrane and is a component of the adaptor protein complex 2. AP2 adaptor complex linking clathrin to receptors in coated vesicles, clathrin-associated protein complexes are believed to interact with cytoplasmic domains of transmembrane proteins leading to their selection and concentration. AP2A2 is involved into cellular trafficking transport.

## Notable Publications

Author	Pubmed ID	Journal	Application
Xin Chen	37254454	Emerg Microbes Infect	WB

## Storage

Storage:

Store at -20°C. Stable for one year after shipment.

Storage Buffer:

PBS with 0.02% sodium azide and 50% glycerol pH 7.3.

Aliquoting is unnecessary for -20°C storage

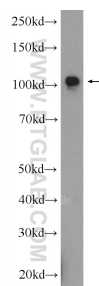
For technical support and original validation data for this product please contact:

T: 4006900926

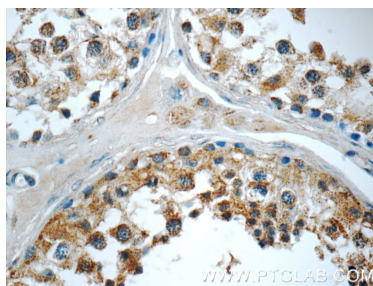
E: [Proteintech-CN@ptglab.com](mailto:Proteintech-CN@ptglab.com)W: [ptgcn.com](http://ptgcn.com)

**This product is exclusively available under Proteintech  
Group brand and is not available to purchase from any  
other manufacturer.**

## Selected Validation Data



mouse brain tissue were subjected to SDS PAGE followed by western blot with 15722-1-AP (AP2A2 Antibody) at dilution of 1:300 incubated at room temperature for 1.5 hours.



Immunohistochemical analysis of paraffin-embedded human testis tissue slide using 15722-1-AP (AP2A2 Antibody) at dilution of 1:50 (under 40x lens).