

For Research Use Only

TUBGCP3 Polyclonal antibody

Catalog Number: 15719-1-AP

Featured Product

11 Publications



Basic Information

Catalog Number:

15719-1-AP

Size:

320 µg/ml

Source:

Rabbit

Isotype:

IgG

Immunogen Catalog Number:

AG8437

GenBank Accession Number:

BC007763

GeneID (NCBI):

10426

UNIPROT ID:

Q96CW5

Full Name:

tubulin, gamma complex associated protein 3

Calculated MW:

103.5 kDa

Observed MW:

95-101 kDa

Purification Method:

Antigen affinity purification

Recommended Dilutions:

WB 1:500-1:2000

Applications

Tested Applications:

WB, ELISA

Cited Applications:

IF, WB

Species Specificity:

human

Cited Species:

human, mouse

Positive Controls:

WB: Jurkat cells, HeLa cells

Background Information

TUBGCP3, also named as γ -tubulin complex protein 3, localized to the centrosome, is a member of γ -tubulin complex proteins which play key roles in microtubule nucleation and organization. It has been reported that TUBGCP3 rotation can bring γ -tubulin molecules into proximity. 15719-1-AP antibody detects the isoform proteins around 95-101 kDa and 50 kDa in SDS-PAGE.

Notable Publications

Author	Pubmed ID	Journal	Application
Rosa Ramírez Cota	27852835	J Cell Sci	WB, IF
Sahana Shankar	36384111	Cell Rep	WB, IF
Guobao Li	31178691	Front Mol Neurosci	WB

Storage

Storage:

Store at -20°C. Stable for one year after shipment.

Storage Buffer:

PBS with 0.02% sodium azide and 50% glycerol pH 7.3.

Aliquoting is unnecessary for -20°C storage

For technical support and original validation data for this product please contact:

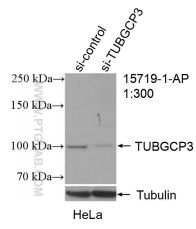
T: 4006900926

E: Proteintech-CN@ptglab.com

W: ptgcn.com

This product is exclusively available under Proteintech Group brand and is not available to purchase from any other manufacturer.

Selected Validation Data



WB result of TUBGCP3 antibody (15719-1-AP; 1:300; incubated at room temperature for 1.5 hours) with sh-Control and sh-TUBGCP3 transfected HeLa cells.

Jurkat cells were subjected to SDS PAGE followed by western blot with 15719-1-AP (TUBGCP3 antibody) at dilution of 1:1000 incubated at room temperature for 1.5 hours.

