

For Research Use Only

GLYATL1 Polyclonal antibody

Catalog Number: 15717-1-AP



Basic Information

Catalog Number: 15717-1-AP	GenBank Accession Number: BC008353	Purification Method: Antigen affinity purification
Size: 240 µg/ml	GeneID (NCBI): 92292	Recommended Dilutions: WB 1:500-1:3000 IHC 1:20-1:200
Source: Rabbit	UNIPROT ID: Q969I3	
Isotype: IgG	Full Name: glycine-N-acyltransferase-like 1	
Immunogen Catalog Number: AG8392	Calculated MW: 302 aa, 35 kDa	
	Observed MW: 35 kDa	

Applications

Tested Applications:
IHC, WB, ELISA

Species Specificity:
human, mouse

Note-IHC: suggested antigen retrieval with TE buffer pH 9.0; (*) Alternatively, antigen retrieval may be performed with citrate buffer pH 6.0

Positive Controls:

WB : human liver tissue, mouse liver tissue

IHC : human ovary tumor tissue,

Background Information

Storage

Storage:
Store at -20°C. Stable for one year after shipment.
Storage Buffer:
PBS with 0.02% sodium azide and 50% glycerol pH 7.3.
Aliquoting is unnecessary for -20°C storage

For technical support and original validation data for this product please contact:

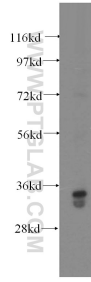
T: 4006900926

E: Proteintech-CN@ptglab.com

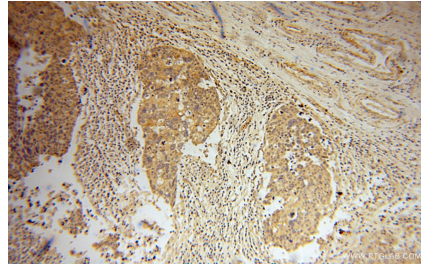
W: ptgcn.com

This product is exclusively available under Proteintech Group brand and is not available to purchase from any other manufacturer.

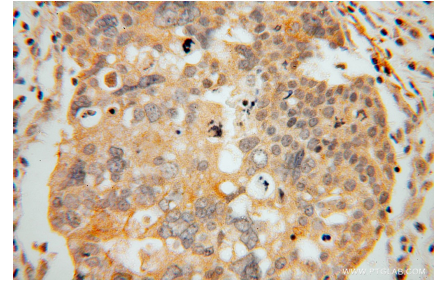
Selected Validation Data



human liver tissue were subjected to SDS PAGE followed by western blot with 15717-1-AP (GLYATL1 antibody) at dilution of 1:500 incubated at room temperature for 1.5 hours.



Immunohistochemical analysis of paraffin-embedded human ovary tumor using 15717-1-AP (GLYATL1 antibody) at dilution of 1:100 (under 10x lens).



Immunohistochemical analysis of paraffin-embedded human ovary tumor using 15717-1-AP (GLYATL1 antibody) at dilution of 1:100 (under 40x lens).