

For Research Use Only

GSS Polyclonal antibody

Catalog Number: 15712-1-AP

Featured Product

20 Publications



Basic Information

Catalog Number:

15712-1-AP

Concentration:

600 ug/ml

Source:

Rabbit

Isotype:

IgG

Immunogen Catalog Number:

AG8338

GenBank Accession Number:

BC007927

GeneID (NCBI):

2937

UNIPROT ID:

P48637

Full Name:

glutathione synthetase

Calculated MW:

474 aa, 52 kDa

Observed MW:

52 kDa

Purification Method:

Antigen affinity purification

Recommended Dilutions:

WB 1:1000-1:4000

IHC 1:100-1:400

IF/ICC 1:50-1:500

Applications

Tested Applications:

WB, IHC, IF/ICC, ELISA

Cited Applications:

WB, IHC, IF

Species Specificity:

human, mouse, rat, pig, canine, hamster

Cited Species:

human, mouse, rat, pig, chicken

Note-IHC: suggested antigen retrieval with TE buffer pH 9.0; (*) Alternatively, antigen retrieval may be performed with citrate buffer pH 6.0

Positive Controls:

WB : CHO cells, HEK-293 cells, mouse liver tissue, rat liver tissue

IHC : human kidney tissue,

IF/ICC : MDCK cells,

Background Information

Notable Publications

Author	Pubmed ID	Journal	Application
Yang Yang	30326393	Redox Biol	WB
Edwin J Squirewell	32873592	Drug Metab Dispos	WB
Peng Zhang	36439878	Int J Biol Sci	WB

Storage

Storage:

Store at -20°C. Stable for one year after shipment.

Storage Buffer:

PBS with 0.02% sodium azide and 50% glycerol pH 7.3.

Aliquoting is unnecessary for -20°C storage

For technical support and original validation data for this product please contact:

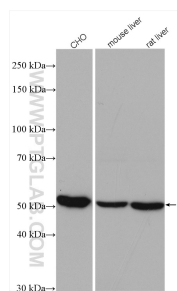
T: 4006900926

E: Proteintech-CN@ptglab.com

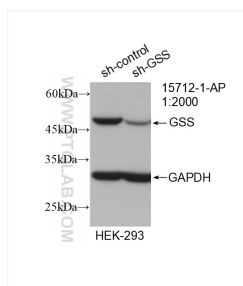
W: ptgcn.com

This product is exclusively available under Proteintech Group brand and is not available to purchase from any other manufacturer.

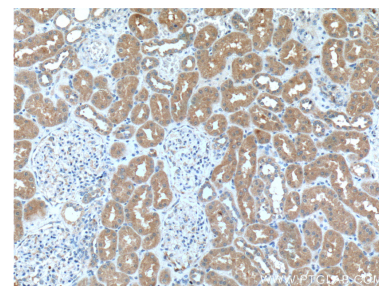
Selected Validation Data



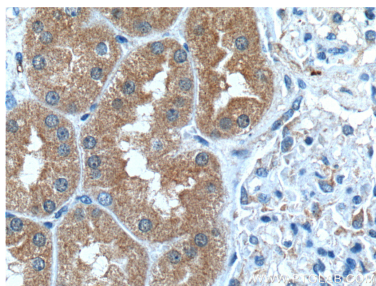
Various lysates were subjected to SDS PAGE followed by western blot with 15712-1-AP (GSS antibody) at dilution of 1:2000 incubated at room temperature for 1.5 hours.



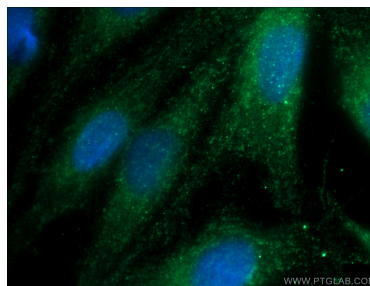
WB result of GSS antibody (15712-1-AP; 1:2000; incubated at room temperature for 1.5 hours) with sh-Control and sh-GSS transfected HEK-293 cells.



Immunohistochemical analysis of paraffin-embedded human kidney tissue slide using 15712-1-AP (GSS Antibody) at dilution of 1:200 (under 10x lens).



Immunohistochemical analysis of paraffin-embedded human kidney tissue slide using 15712-1-AP (GSS Antibody) at dilution of 1:200 (under 40x lens).



Immunofluorescent analysis of (-20°C Ethanol) fixed MDCK cells using 15712-1-AP (GSS antibody) at dilution of 1:50 and Alexa Fluor 488-conjugated AffiniPure Goat Anti-Rabbit IgG(H+L).