

For Research Use Only

AMPD2 Polyclonal antibody

Catalog Number: 15710-1-AP **1 Publications**



Basic Information

Catalog Number:

15710-1-AP

Size:

400 µg/ml

Source:

Rabbit

Isotype:

IgG

Immunogen Catalog Number:

AG8335

GenBank Accession Number:

BC007711

GeneID (NCBI):

271

UNIPROT ID:

Q01433

Full Name:

adenosine monophosphate
deaminase 2 (isoform L)

Calculated MW:

879aa, 101 kDa; 798aa, 92 kDa

Observed MW:

101 kDa

Purification Method:

Antigen affinity purification

Recommended Dilutions:

WB 1:500-1:2400

IHC 1:100-1:400

Applications

Tested Applications:

IHC, WB, ELISA

Cited Applications:

IHC

Species Specificity:

human, mouse, rat

Cited Species:

human

Positive Controls:

WB: human liver tissue,

IHC: human cerebellum tissue,

Note-IHC: suggested antigen retrieval with TE buffer pH 9.0; (*) Alternatively, antigen retrieval may be performed with citrate buffer pH 6.0

Background Information

Adenosine monophosphate deaminase (AMPD) catalyzes the deamination of AMP to IMP and plays an important role in the purine nucleotide cycle. Three AMPDs are present in mammals named AMPD1/2/3. AMPD2 is the main activity present in adult human liver and is widely expressed in non-muscle tissues and cells (PMID: 8526848). AMPD2 has some isoforms with the molecular mass of 88-101 kDa.

Notable Publications

Author	Pubmed ID	Journal	Application
Qi-Zhong Gao	32874974	World J Clin Cases	IHC

Storage

Storage:

Store at -20°C. Stable for one year after shipment.

Storage Buffer:

PBS with 0.02% sodium azide and 50% glycerol pH 7.3.

Aliquoting is unnecessary for -20°C storage

For technical support and original validation data for this product please contact:

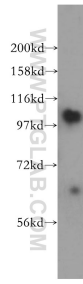
T: 4006900926

E: Proteintech-CN@ptglab.com

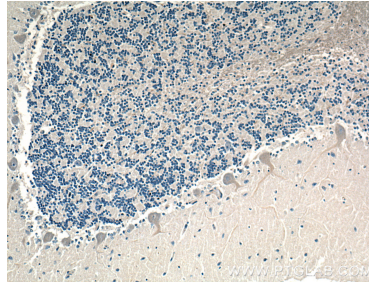
W: ptgcn.com

This product is exclusively available under Proteintech Group brand and is not available to purchase from any other manufacturer.

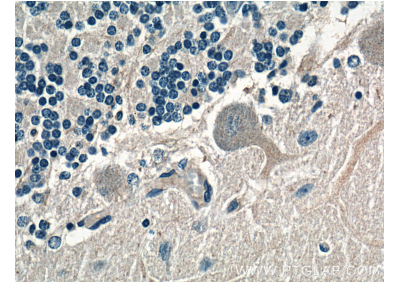
Selected Validation Data



human liver tissue were subjected to SDS PAGE followed by western blot with 15710-1-AP (AMPD2 antibody) at dilution of 1:500 incubated at room temperature for 1.5 hours.



Immunohistochemical analysis of paraffin-embedded human cerebellum tissue slide using 15710-1-AP (AMPD2 Antibody) at dilution of 1:200 (under 10x lens).



Immunohistochemical analysis of paraffin-embedded human cerebellum tissue slide using 15710-1-AP (AMPD2 Antibody) at dilution of 1:200 (under 40x lens).