

For Research Use Only

# L2HGDH Polyclonal antibody

Catalog Number: 15707-1-AP

Featured Product

17 Publications



## Basic Information

### Catalog Number:

15707-1-AP

### Size:

700 µg/ml

### Source:

Rabbit

### Isotype:

IgG

### Immunogen Catalog Number:

AG8382

### GenBank Accession Number:

BC006117

### GeneID (NCBI):

79944

### UNIPROT ID:

Q9H9P8

### Full Name:

L-2-hydroxyglutarate dehydrogenase

### Calculated MW:

463aa, 50 kDa; 441aa, 49 kDa

### Observed MW:

45 kDa

### Purification Method:

Antigen affinity purification

### Recommended Dilutions:

WB 1:1000-1:3000

IHC 1:50-1:500

## Applications

### Tested Applications:

WB, IHC, ELISA

### Cited Applications:

WB, IHC

### Species Specificity:

human, mouse, rat

### Cited Species:

human, mouse

**Note-IHC: suggested antigen retrieval with TE buffer pH 9.0; (\*) Alternatively, antigen retrieval may be performed with citrate buffer pH 6.0**

### Positive Controls:

**WB:** A549 cells, rat brain tissue, mouse small intestine tissue, SGC-7901 cells, MCF-7 cells

**IHC:** human liver cancer tissue, human gliomas tissue

## Background Information

L2HGDH (L-2-hydroxyglutarate dehydrogenase, mitochondrial) is also named as duranin, C14orf160 and belongs to the L2HGDH family. The putative L2HGDH is predicted to be targeted to the mitochondria where its mitochondrial targeting sequence is presumably removed (PMID:16005139). Defects in L2HGDH are the cause of L-2-hydroxyglutaric aciduria (L2HGA). It has 2 isoforms produced by alternative splicing with the molecular weight of 50 kDa and 48 kDa. L2HGDH also can be detected as ~45kD due to the 51aa transit peptide cleaved.

## Notable Publications

Author	Pubmed ID	Journal	Application
Giulia Notarangelo	36173860	Science	WB
Mary Taub	36133305	Front Endocrinol (Lausanne)	WB
Jing Zhao	34650276	Nat Metab	WB

## Storage

### Storage:

Store at -20°C. Stable for one year after shipment.

### Storage Buffer:

PBS with 0.02% sodium azide and 50% glycerol pH 7.3.

Aliquoting is unnecessary for -20°C storage

For technical support and original validation data for this product please contact:

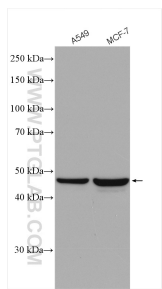
T: 4006900926

E: [Proteintech-CN@ptglab.com](mailto:Proteintech-CN@ptglab.com)

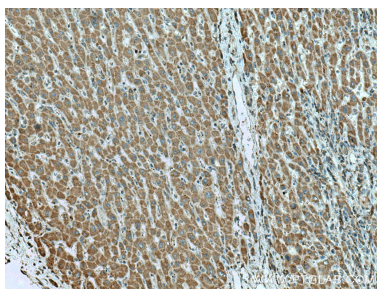
W: [ptgcn.com](http://ptgcn.com)

**This product is exclusively available under Proteintech Group brand and is not available to purchase from any other manufacturer.**

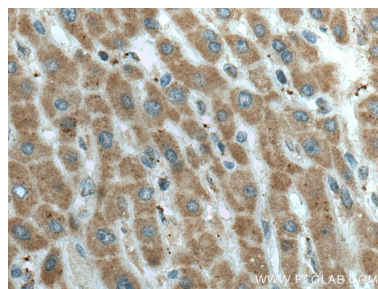
Selected Validation Data



Various lysates were subjected to SDS PAGE followed by western blot with 15707-1-AP (L2HGDH antibody) at dilution of 1:1000 incubated at room temperature for 1.5 hours.



Immunohistochemical analysis of paraffin-embedded human liver cancer tissue slide using 15707-1-AP (L2HGDH antibody) at dilution of 1:200 (under 10x lens). Heat mediated antigen retrieval with Tris-EDTA buffer (pH 9.0).



Immunohistochemical analysis of paraffin-embedded human liver cancer tissue slide using 15707-1-AP (L2HGDH antibody) at dilution of 1:200 (under 40x lens). Heat mediated antigen retrieval with Tris-EDTA buffer (pH 9.0).