

For Research Use Only

TK1 Polyclonal antibody

Catalog Number: 15691-1-AP

Featured Product

13 Publications



Basic Information

Catalog Number:

15691-1-AP

Concentration:

450 ug/ml

Source:

Rabbit

Isotype:

IgG

Immunogen Catalog Number:

AG8249

GenBank Accession Number:

BC007986

GeneID (NCBI):

7083

UNIPROT ID:

P04183

Full Name:

thymidine kinase 1, soluble

Calculated MW:

25 kDa

Observed MW:

25-30 kDa

Purification Method:

Antigen affinity purification

Recommended Dilutions:

WB 1:5000-1:50000

IP 0.5-4.0 ug for 1.0-3.0 mg of total protein lysate

IHC 1:50-1:500

IF/ICC 1:50-1:500

Applications

Tested Applications:

WB, IHC, IF/ICC, IP, ELISA

Cited Applications:

WB, IHC, IF

Species Specificity:

human

Cited Species:

human, mouse, rat

Note-IHC: suggested antigen retrieval with TE buffer pH 9.0; (*) Alternatively, antigen retrieval may be performed with citrate buffer pH 6.0

Positive Controls:

WB : HEK-293 cells, MCF-7 cells, SW 1990 cells

IP : HEK-293 cells,

IHC : human breast cancer tissue,

IF/ICC : U2OS cells,

Background Information

TK1(Thymidine kinase, cytosolic) belongs to the thymidine kinase family and is a regulatory enzyme that can interchange between its dimeric and tetrameric forms, which have low and high catalytic efficiencies, respectively. TK1 is involved in DNA synthesis and an important proliferation marker(PMID:21178264).

Notable Publications

Author	Pubmed ID	Journal	Application
Morgan S Schrock	27773744	Adv Biol Regul	WB
Foyan Lian	33218277	Cancer Biol Ther	WB
Xu Jiang	31062473	J Cell Mol Med	WB

Storage

Storage:

Store at -20°C. Stable for one year after shipment.

Storage Buffer:

PBS with 0.02% sodium azide and 50% glycerol, pH7.3

Aliquoting is unnecessary for -20°C storage

For technical support and original validation data for this product please contact:

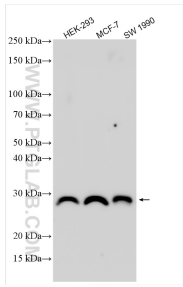
T: 4006900926

E: Proteintech-CN@ptglab.com

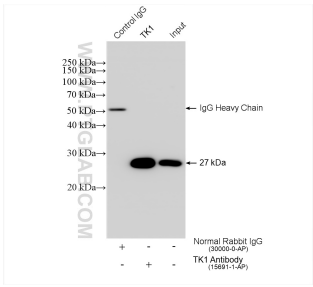
W: ptgcn.com

This product is exclusively available under Proteintech Group brand and is not available to purchase from any other manufacturer.

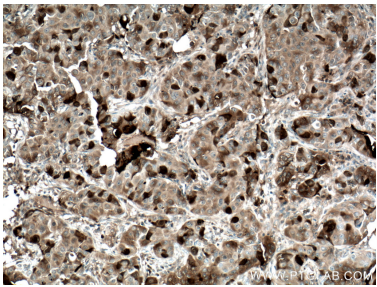
Selected Validation Data



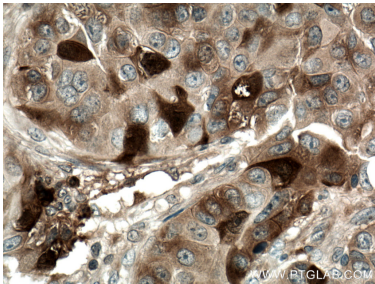
Various lysates were subjected to SDS PAGE followed by western blot with 15691-1-AP (TK1 antibody) at dilution of 1:15000 incubated at room temperature for 1.5 hours.



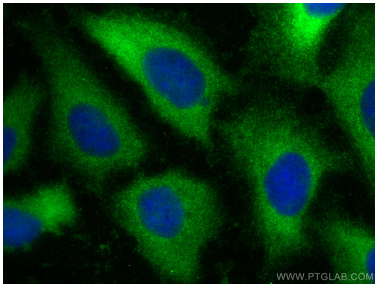
IP result of anti-TK1 (IP:15691-1-AP, 4ug; Detection:15691-1-AP 1:800) with HEK-293 cells lysate 1400 ug.



Immunohistochemical analysis of paraffin-embedded human breast cancer tissue slide using 15691-1-AP (TK1 antibody) at dilution of 1:200 (under 10x lens. Heat mediated antigen retrieval with Tris-EDTA buffer (pH 9.0).



Immunohistochemical analysis of paraffin-embedded human breast cancer tissue slide using 15691-1-AP (TK1 antibody) at dilution of 1:200 (under 40x lens. Heat mediated antigen retrieval with Tris-EDTA buffer (pH 9.0).



Immunofluorescent analysis of (-20°C Methanol) fixed U2OS cells using TK1 antibody (15691-1-AP) at dilution of 1:200 and CoraLite®488-Conjugated AffiniPure Goat Anti-Rabbit IgG(H+L).