

For Research Use Only

# ERCC6L Polyclonal antibody

Catalog Number: 15688-1-AP

Featured Product

7 Publications



## Basic Information

**Catalog Number:**

15688-1-AP

**Size:**

1200 µg/ml

**Source:**

Rabbit

**Isotype:**

IgG

**Immunogen Catalog Number:**

AG8223

**GenBank Accession Number:**

BC008808

**GeneID (NCBI):**

54821

**UNIPROT ID:**

Q2NIX8

**Full Name:**

excision repair cross-complementing  
rodent repair deficiency,  
complementation group 6-like

**Calculated MW:**

419 aa, 46 kDa, 141 kDa

**Observed MW:**

180 kDa

**Purification Method:**

Antigen affinity purification

**Recommended Dilutions:**

WB 1:1000-1:6000

IHC 1:50-1:500

## Applications

**Tested Applications:**

IHC, WB, ELISA

**Cited Applications:**

WB, IHC

**Species Specificity:**

human, mouse

**Cited Species:**

human, mouse

**Positive Controls:**

**WB:** HeLa cells, human heart tissue, mouse lung tissue,  
Jurkat cells, K-562 cells, U2OS cells

**IHC:** human colon cancer tissue,

**Note-IHC: suggested antigen retrieval with  
TE buffer pH 9.0; (\*) Alternatively, antigen  
retrieval may be performed with citrate  
buffer pH 6.0**

## Background Information

ERCC6L, also named as Tumor antigen BJ-HCC-15 or PICH, is a 1250 amino acid protein, which contains one helicase ATP-binding domain, one helicase C-terminal domain and two TPR repeats. ERCC6L localizes to kinetochores, inner centromeres and belongs to the SNF2/RAD54 helicase family. ERCC6L as a DNA helicase that acts as an essential component of the spindle assembly checkpoint. The calculated molecular weight of ERCC6L is 140 kDa, but the phosphorylated modification of molecular weight of ERCC6L is about 180kDa.

## Notable Publications

Author	Pubmed ID	Journal	Application
Han Chen	32891122	BMC Cancer	WB
Ma-Li Zu	33716078	J Ethnopharmacol	WB
Xiaoyue Huang	35656882	Oncol Rep	WB

## Storage

**Storage:**

Store at -20°C. Stable for one year after shipment.

**Storage Buffer:**

PBS with 0.02% sodium azide and 50% glycerol pH 7.3.

Aliquoting is unnecessary for -20°C storage

For technical support and original validation data for this product please contact:

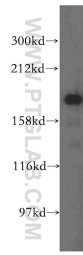
T: 4006900926

E: Proteintech-CN@ptglab.com

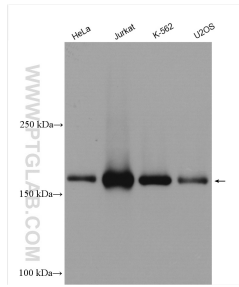
W: ptgcn.com

**This product is exclusively available under Proteintech Group brand and is not available to purchase from any other manufacturer.**

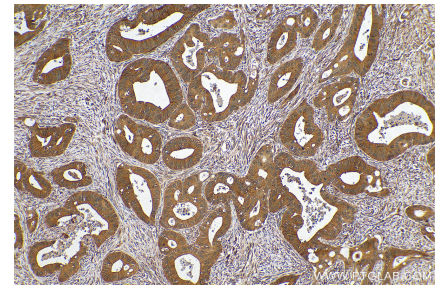
## Selected Validation Data



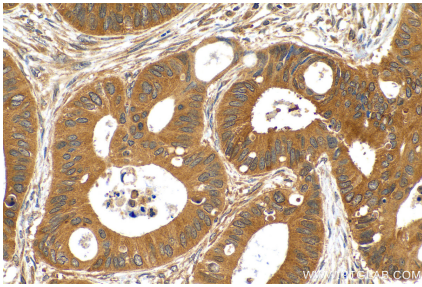
human heart tissue were subjected to SDS PAGE followed by western blot with 15688-1-AP (ERCC6L antibody) at dilution of 1:800 incubated at room temperature for 1.5 hours.



Various lysates were subjected to SDS PAGE followed by western blot with 15688-1-AP (ERCC6L antibody) at dilution of 1:3000 incubated at room temperature for 1.5 hours.



Immunohistochemical analysis of paraffin-embedded human colon cancer tissue slide using 15688-1-AP (ERCC6L antibody) at dilution of 1:200 (under 10x lens). Heat mediated antigen retrieval with Tris-EDTA buffer (pH 9.0).



Immunohistochemical analysis of paraffin-embedded human colon cancer tissue slide using 15688-1-AP (ERCC6L antibody) at dilution of 1:200 (under 40x lens). Heat mediated antigen retrieval with Tris-EDTA buffer (pH 9.0).