

For Research Use Only

REEP2 Polyclonal antibody, PBS Only

Catalog Number: 15684-1-PBS

Featured Product



Basic Information

Catalog Number:

15684-1-PBS

Source:

Rabbit

Isotype:

IgG

Immunogen Catalog Number:

AG8186

GenBank Accession Number:

BC006218

GeneID (NCBI):

51308

UNIPROT ID:

Q9BRK0

Full Name:

receptor accessory protein 2

Calculated MW:

252 aa, 28 kDa

Observed MW:

28 kDa

Purification Method:

Antigen affinity purification

Applications

Tested Applications:

WB, IHC, IF-P, FC (Intra), IP, Indirect ELISA

Species Specificity:

human, mouse, rat

Background Information

Storage

Storage:

Store at -80°C.

The product is shipped with ice packs. Upon receipt, store it immediately at -80°C

Storage Buffer:

PBS only, pH7.3

For technical support and original validation data for this product please contact:

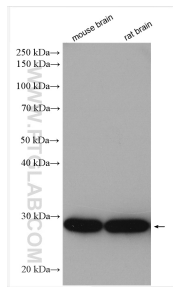
T: 4006900926

E: Proteintech-CN@ptglab.com

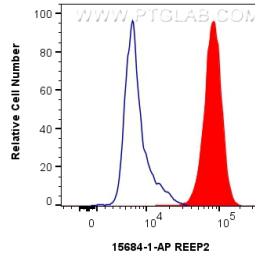
W: ptgcn.com

This product is exclusively available under Proteintech Group brand and is not available to purchase from any other manufacturer.

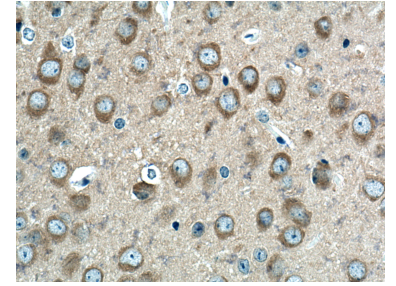
Selected Validation Data



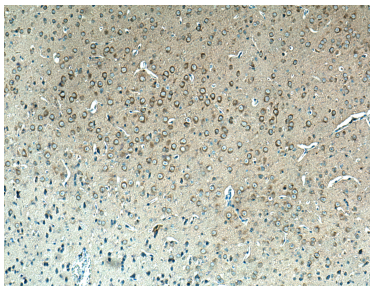
Various lysates were subjected to SDS PAGE followed by western blot with 15684-1-AP (REEP2 antibody) at dilution of 1:6000 incubated at room temperature for 1.5 hours. This data was developed using the same antibody clone with 15684-1-PBS in a different storage buffer formulation.



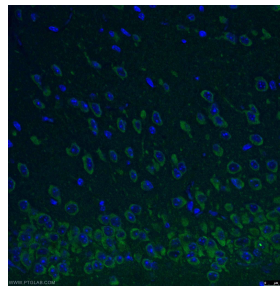
1×10^6 SH-SY5Y cells were intracellularly stained with 0.4 ug REEP2 Polyclonal antibody (15684-1-AP) and CoraLite®488-Conjugated AffiniPure Goat Anti-Rabbit IgG(H+L) (SA00013-2)(red), or 0.4 ug rabbit IgG isotype control (blue). Cells were fixed with 4% PFA and permeabilized with Flow Cytometry Perm Buffer. This data was developed using the same antibody clone with 15684-1-PBS in a different storage buffer formulation.



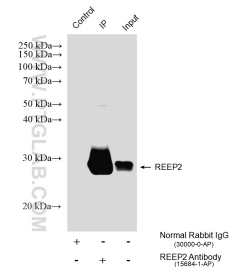
Immunohistochemical analysis of paraffin-embedded mouse brain tissue slide using 15684-1-AP (REEP2 antibody) at dilution of 1:200 (under 40x lens). Heat mediated antigen retrieval with Tris-EDTA buffer (pH 9.0). This data was developed using the same antibody clone with 15684-1-PBS in a different storage buffer formulation.



Immunohistochemical analysis of paraffin-embedded mouse brain tissue slide using 15684-1-AP (REEP2 antibody) at dilution of 1:200 (under 10x lens). Heat mediated antigen retrieval with Tris-EDTA buffer (pH 9.0). This data was developed using the same antibody clone with 15684-1-PBS in a different storage buffer formulation.



Immunofluorescent analysis of (4% PFA) fixed mouse brain tissue using 15684-1-AP (REEP2 antibody) at dilution of 1:50 and CoraLite488-Conjugated AffiniPure Goat Anti-Rabbit IgG(H+L). This data was developed using the same antibody clone with 15684-1-PBS in a different storage buffer formulation.



IP result of anti-REEP2 (IP:15684-1-AP, 4ug; Detection:15684-1-AP 1:5000) with mouse brain tissue lysate 1680 ug. This data was developed using the same antibody clone with 15684-1-PBS in a different storage buffer formulation.