

For Research Use Only

Islet 1 Polyclonal antibody

Catalog Number: 15661-1-AP

4 Publications



Basic Information

Catalog Number:

15661-1-AP

Size:

800 µg/ml

Source:

Rabbit

Isotype:

IgG

Immunogen Catalog Number:

AG8088

GenBank Accession Number:

BC031213

GeneID (NCBI):

3670

UNIPROT ID:

P61371

Full Name:

ISL LIM homeobox 1

Calculated MW:

39 kDa

Observed MW:

39-45 kDa

Purification Method:

Antigen affinity purification

Recommended Dilutions:

WB 1:500-1:2400

IP 0.5-4.0 µg for 1.0-3.0 mg of total protein lysate

IHC 1:20-1:200

IF/ICC 1:50-1:500

Applications

Tested Applications:

WB, IHC, IF/ICC, FC (Intra), IP, ELISA

Cited Applications:

IF

Species Specificity:

human

Cited Species:

human

Positive Controls:

WB : BxPC-3 cells, HeLa cells

IP : HeLa cells,

IHC : human pancreas cancer tissue, human pancreas tissue

IF/ICC : SH-SY5Y cells,

Note-IHC: suggested antigen retrieval with TE buffer pH 9.0; (*) Alternatively, antigen retrieval may be performed with citrate buffer pH 6.0

Background Information

ISL1 belongs to the LIM homeodomain transcription factor family that binds to the enhancer region of the INS gene. It plays a pivotal role in cardiogenesis, and lacking ISL1 expression results in growth arrest or displays profound defects in heart development, including atria, ventricle, and the inflow and outflow tracts.

Notable Publications

Author	Pubmed ID	Journal	Application
Fangkun Liu	30599272	Neuroscience	IF
Daniel Kulick	36511510	ACS Chem Neurosci	
Jing Huang	29270148	Front Neurol	IF

Storage

Storage:

Store at -20°C. Stable for one year after shipment.

Storage Buffer:

PBS with 0.02% sodium azide and 50% glycerol pH 7.3.

Aliquoting is unnecessary for -20°C storage

For technical support and original validation data for this product please contact:

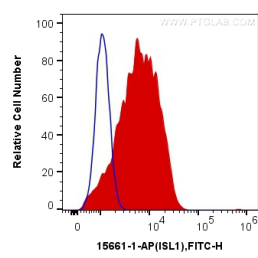
T: 4006900926

E: Proteintech-CN@ptglab.com

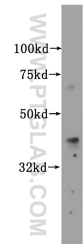
W: ptgcn.com

This product is exclusively available under Proteintech Group brand and is not available to purchase from any other manufacturer.

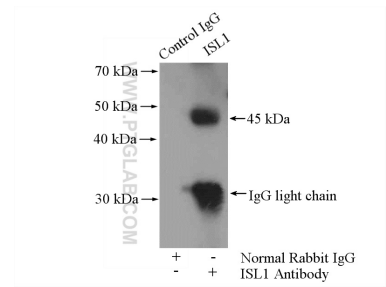
Selected Validation Data



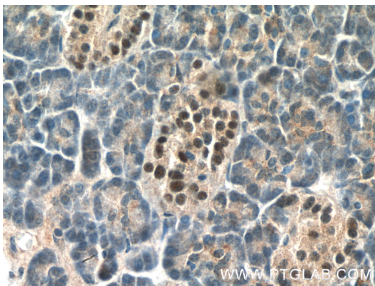
1X10⁶ SH-SY5Y cells were intracellularly stained with 0.2 ug Anti-Human Islet 1 (15661-1-AP) and CoraLite®488-Conjugated Goat Anti-Rabbit IgG(H+L) at dilution 1:1000 (red), or 0.2 ug Control Antibody. Cells were fixed with 4% PFA and permeabilized with 0.1% TritonX-100.



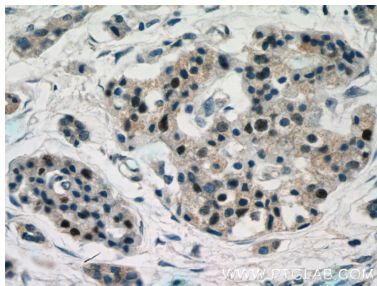
BxPC-3 cells were subjected to SDS PAGE followed by western blot with 15661-1-AP (ISL1 antibody) at dilution of 1:500 incubated at room temperature for 1.5 hours.



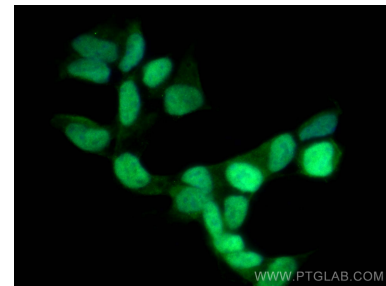
IP result of anti-Islet 1 (IP:15661-1-AP, 4ug; Detection:15661-1-AP 1:500) with HeLa cells lysate 2000ug.



Immunohistochemical analysis of paraffin-embedded human pancreas tissue slide using 15661-1-AP (Islet 1 Antibody) at dilution of 1:200 (under 40x lens).



Immunohistochemical analysis of paraffin-embedded human pancreas cancer tissue slide using 15661-1-AP (Islet 1 Antibody) at dilution of 1:200 (under 40x lens).



Immunofluorescent analysis of (4% PFA) fixed SH-SY5Y cells using Islet 1 antibody (15661-1-AP) at dilution of 1:200 and CoraLite®488-Conjugated Goat Anti-Rabbit IgG(H+L).