

For Research Use Only

XPNPEP3 Polyclonal antibody

Catalog Number: 15655-1-AP



Basic Information

Catalog Number:

15655-1-AP

Size:

500 ug/ml

Source:

Rabbit

Isotype:

IgG

Immunogen Catalog Number:

AG8007

GenBank Accession Number:

BC004989

GeneID (NCBI):

63929

UNIPROT ID:

Q9NQH7

Full Name:

X-prolyl aminopeptidase
(aminopeptidase P) 3, putative

Calculated MW:

57 kDa

Observed MW:

57 kDa

Purification Method:

Antigen affinity purification

Recommended Dilutions:

WB 1:1000-1:8000

IP 0.5-4.0 ug for 1.0-3.0 mg of total
protein lysate

IHC 1:50-1:500

Applications

Tested Applications:

WB, IHC, IP, ELISA

Species Specificity:

human, mouse, rat

**Note-IHC: suggested antigen retrieval with
TE buffer pH 9.0; (*) Alternatively, antigen
retrieval may be performed with citrate
buffer pH 6.0**

Positive Controls:

WB: A431 cells, human testis tissue, human spleen
tissue, PC-3 cells, 4T1 cells, mouse liver

IP: PC-3 cells,

IHC: mouse liver tissue, human oesophagus tissue

Background Information

XPNPEP3 gene encodes X-prolyl aminopeptidase 3 which functions to remove the penultimate N-terminal Proline residue from nascent proteins and appears to play a role in ciliary function. CRC tissue microarray revealed increased XPNPEP3 expression in tumor compared to matched normal samples (PMID:29383790). Other study found that XPNPEP3 localizes to mitochondria in renal cells in vitro and to kidney tubules in a cell type-specific pattern, and mutations in the gene are associated with NPHP-like disorder (PMID:20179356).

Storage

Storage:

Store at -20°C. Stable for one year after shipment.

Storage Buffer:

PBS with 0.02% sodium azide and 50% glycerol pH 7.3.

Aliquoting is unnecessary for -20°C storage

For technical support and original validation data for this product please contact:

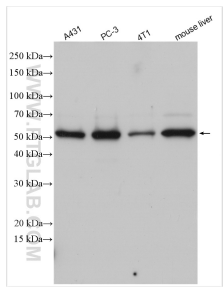
T: 4006900926

E: Proteintech-CN@ptglab.com

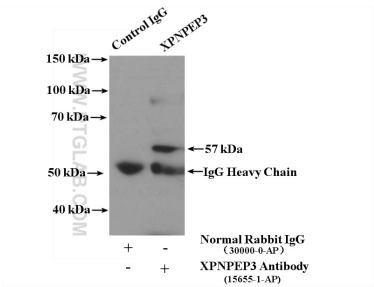
W: ptgcn.com

This product is exclusively available under Proteintech Group brand and is not available to purchase from any other manufacturer.

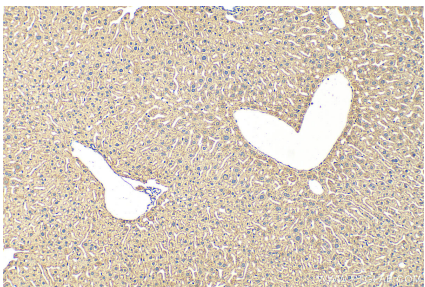
Selected Validation Data



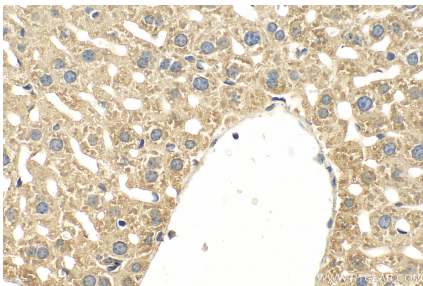
Various lysates were subjected to SDS PAGE followed by western blot with 15655-1-AP (XPNPEP3 antibody) at dilution of 1:4000 incubated at room temperature for 1.5 hours.



IP result of anti-XPNPEP3 (IP:15655-1-AP, 4ug; Detection:15655-1-AP 1:400) with PC-3 cells lysate 2000ug.



Immunohistochemical analysis of paraffin-embedded mouse liver tissue slide using 15655-1-AP (XPNPEP3 antibody) at dilution of 1:100 (under 10x lens). Heat mediated antigen retrieval with Tris-EDTA buffer (pH 9.0).



Immunohistochemical analysis of paraffin-embedded mouse liver tissue slide using 15655-1-AP (XPNPEP3 antibody) at dilution of 1:100 (under 40x lens). Heat mediated antigen retrieval with Tris-EDTA buffer (pH 9.0).