

For Research Use Only

MTO1 Polyclonal antibody

Catalog Number: 15650-1-AP

Featured Product

10 Publications



Basic Information

Catalog Number:

15650-1-AP

Size:

350 µg/ml

Source:

Rabbit

Isotype:

IgG

Immunogen Catalog Number:

AG8192

GenBank Accession Number:

BC005808

GeneID (NCBI):

25821

UNIPROT ID:

Q9Y2Z2

Full Name:

mitochondrial translation optimization 1 homolog (S. cerevisiae)

Calculated MW:

717 aa, 80 kDa

Observed MW:

70-75 kDa

Purification Method:

Antigen affinity purification

Recommended Dilutions:

WB 1:500-1:2000

IF 1:50-1:500

Applications

Tested Applications:

IF/ICC, WB, ELISA

Cited Applications:

WB, ColP

Species Specificity:

human

Cited Species:

human

Positive Controls:

WB : MCF-7 cells, human liver tissue

IF : MCF-7 cells,

Background Information

Notable Publications

Author	Pubmed ID	Journal	Application
Uwe Richter	30262910	Nat Commun	WB
Laura S Kremer	27151179	J Hepatol	WB
Boczonadi Veronika V	23814040	Hum Mol Genet	WB

Storage

Storage:

Store at -20°C. Stable for one year after shipment.

Storage Buffer:

PBS with 0.02% sodium azide and 50% glycerol pH 7.3.

Aliquoting is unnecessary for -20°C storage

For technical support and original validation data for this product please contact:

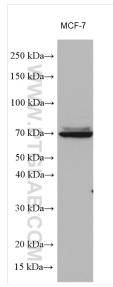
T: 4006900926

E: Proteintech-CN@ptglab.com

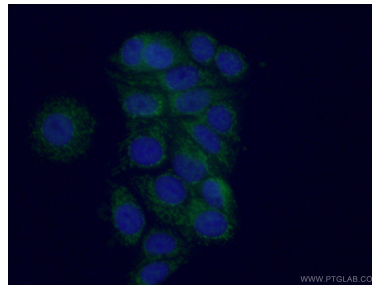
W: ptgcn.com

This product is exclusively available under Proteintech Group brand and is not available to purchase from any other manufacturer.

Selected Validation Data



MCF-7 cells were subjected to SDS PAGE followed by western blot with 15650-1-AP (MTO1 antibody) at dilution of 1:1000 incubated at room temperature for 1.5 hours.



Immunofluorescent analysis of (4% PFA) fixed MCF-7 cells using 15650-1-AP (MTO1 antibody) at dilution of 1:50 and Alexa Fluor 488-conjugated AffiniPure Goat Anti-Rabbit IgG(H+L).