

For Research Use Only

SH2D3A Polyclonal antibody, PBS Only

Catalog Number: 15641-1-PBS



Basic Information

Catalog Number: 15641-1-PBS	GenBank Accession Number: BC006281	Purification Method: Antigen affinity purification
Concentration: 1 mg/ml	GeneID (NCBI): 10045	
Source: Rabbit	UNIPROT ID: Q9BRG2	
Isotype: IgG	Full Name: SH2 domain containing 3A	
Immunogen Catalog Number: AG8132	Calculated MW: 576 aa, 63 kDa	
	Observed MW: 64 kDa	

Applications

Tested Applications:
WB, IHC, IF/ICC, Indirect ELISA

Species Specificity:
human

Background Information

SH2 domain containing 3A (SH2D3A) is a novel SH2-containing protein 1 (NSP1) with proline-rich domains and therefore probably involved in the signal-transduction of some ligand-activated tyrosine kinase receptors. Three phosphorylation sites of NSP1 have been found to date. NSP1 may be located at cell membrane play a role in JNK activation.

Storage

Storage:
Store at -80°C.
The product is shipped with ice packs. Upon receipt, store it immediately at -80°C

Storage Buffer:
PBS Only

For technical support and original validation data for this product please contact:

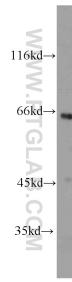
T: 4006900926

E: Proteintech-CN@ptglab.com

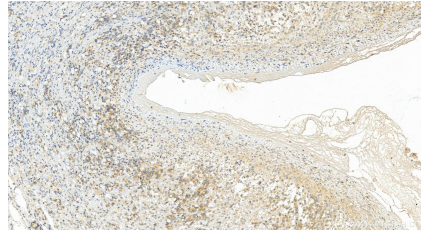
W: ptgcn.com

This product is exclusively available under Proteintech Group brand and is not available to purchase from any other manufacturer.

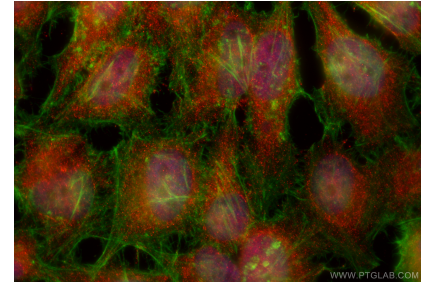
Selected Validation Data



HeLa cells were subjected to SDS PAGE followed by western blot with 15641-1-AP (SH2D3A antibody) at dilution of 1:1000 incubated at room temperature for 1.5 hours. This data was developed using the same antibody clone with 15641-1-PBS in a different storage buffer formulation.



Immunohistochemical analysis of paraffin-embedded human ovary cancer tissue slide using 15641-1-AP (SH2D3A antibody) at dilution of 1:400 (under 20x lens). Heat mediated antigen retrieval with Tris-EDTA buffer (pH 9.0). This data was developed using the same antibody clone with 15641-1-PBS in a different storage buffer formulation.



Immunofluorescent analysis of (4% PFA) fixed HeLa cells using SH2D3A antibody (15641-1-AP) at dilution of 1:200 and CoraLite®594-Conjugated Goat Anti-Rabbit IgG(H+L) (SA00013-4), CL488-Phalloidin (green). This data was developed using the same antibody clone with 15641-1-PBS in a different storage buffer formulation.