

For Research Use Only

# SH2D3A Polyclonal antibody

Catalog Number: 15641-1-AP



## Basic Information

<b>Catalog Number:</b> 15641-1-AP	<b>GenBank Accession Number:</b> BC006281	<b>Purification Method:</b> Antigen affinity purification
<b>Concentration:</b> 400 ug/ml	<b>GeneID (NCBI):</b> 10045	<b>Recommended Dilutions:</b> WB 1:500-1:1000
<b>Source:</b> Rabbit	<b>UNIPROT ID:</b> Q9BRG2	IHC 1:200-1:800
<b>Isotype:</b> IgG	<b>Full Name:</b> SH2 domain containing 3A	IF/ICC 1:50-1:500
<b>Immunogen Catalog Number:</b> AG8132	<b>Calculated MW:</b> 576 aa, 63 kDa	
	<b>Observed MW:</b> 64 kDa	

## Applications

<b>Tested Applications:</b> WB, IHC, IF/ICC, ELISA	<b>Positive Controls:</b>
<b>Species Specificity:</b> human	<b>WB :</b> HeLa cells, HEK-293 cells, HepG2 cells
<b>Note-IHC:</b> suggested antigen retrieval with <b>TE buffer pH 9.0; (*) Alternatively, antigen retrieval may be performed with citrate buffer pH 6.0</b>	<b>IHC :</b> human ovary cancer tissue,
	<b>IF/ICC :</b> HeLa cells,

## Background Information

SH2 domain containing 3A (SH2D3A) is a novel SH2-containing protein 1 (NSP1) with proline-rich domains and therefore probably involved in the signal-transduction of some ligand-activated tyrosine kinase receptors. Three phosphorylation sites of NSP1 have been found to date. NSP1 may be located at cell membrane play a role in JNK activation.

## Storage

**Storage:**  
Store at -20°C. Stable for one year after shipment.  
**Storage Buffer:**  
PBS with 0.02% sodium azide and 50% glycerol pH 7.3.  
Aliquoting is unnecessary for -20°C storage

For technical support and original validation data for this product please contact:

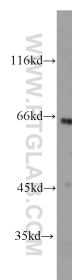
T: 4006900926

E: [Proteintech-CN@ptglab.com](mailto:Proteintech-CN@ptglab.com)

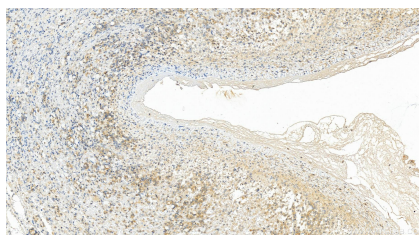
W: [ptgcn.com](http://ptgcn.com)

This product is exclusively available under Proteintech Group brand and is not available to purchase from any other manufacturer.

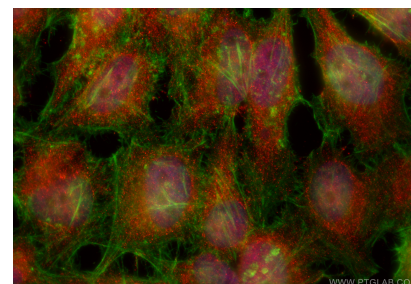
## Selected Validation Data



HeLa cells were subjected to SDS PAGE followed by western blot with 15641-1-AP (SH2D3A antibody) at dilution of 1:1000 incubated at room temperature for 1.5 hours.



Immunohistochemical analysis of paraffin-embedded human ovary cancer tissue slide using 15641-1-AP (SH2D3A antibody) at dilution of 1:400 (under 20x lens). Heat mediated antigen retrieval with Tris-EDTA buffer (pH 9.0).



Immunofluorescent analysis of (4% PFA) fixed HeLa cells using SH2D3A antibody (15641-1-AP) at dilution of 1:200 and CoraLite®594-Conjugated Goat Anti-Rabbit IgG(H+L) (SA00013-4), CL488-Phalloidin (green).