

For Research Use Only

# ADPGK Polyclonal antibody

Catalog Number: 15639-1-AP **3 Publications**



## Basic Information

<b>Catalog Number:</b> 15639-1-AP	<b>GenBank Accession Number:</b> BC006112	<b>Purification Method:</b> Antigen affinity purification
<b>Concentration:</b> 350 ug/ml	<b>GeneID (NCBI):</b> 83440	<b>Recommended Dilutions:</b> WB 1:500-1:2000 IHC 1:20-1:200 IF/ICC 1:50-1:500
<b>Source:</b> Rabbit	<b>UNIPROT ID:</b> Q9BRR6	
<b>Isotype:</b> IgG	<b>Full Name:</b> ADP-dependent glucokinase	
<b>Immunogen Catalog Number:</b> AG8105	<b>Calculated MW:</b> 497 aa, 54 kDa	
	<b>Observed MW:</b> 51 kDa	

## Applications

<b>Tested Applications:</b> WB, IHC, IF/ICC, ELISA	<b>Positive Controls:</b> WB : HeLa cells, HepG2 cells, Jurkat cells, MOLT-4 cells IHC : human liver tissue, IF/ICC : HeLa cells,
<b>Cited Applications:</b> WB, IF	
<b>Species Specificity:</b> human, mouse, rat	
<b>Cited Species:</b> human	
<b>Note-IHC: suggested antigen retrieval with TE buffer pH 9.0; (*) Alternatively, antigen retrieval may be performed with citrate buffer pH 6.0</b>	

## Background Information

ADP-dependent glucokinase (ADPGK) has first been described 1994 in hyperthermophilic archaea as a novel glucose-phosphorylating enzyme dependent on ADP (adenosine diphosphate) instead of ATP (adenosine triphosphate). Highest ADPGK expression is found in immune cells of both myeloid and lymphoid lineages. Catalyzes the phosphorylation of D-glucose to D-glucose 6-phosphate using ADP as the phosphate donor. GDP and CDP can replace ADP, but with reduced efficiency (By similarity).

## Notable Publications

Author	Pubmed ID	Journal	Application
Kai Zhang	34867191	Front Mol Neurosci	WB, IF
Xin Zhen	39630167	J Clin Immunol	WB
Xin Zhen	39041036	Res Sq	WB

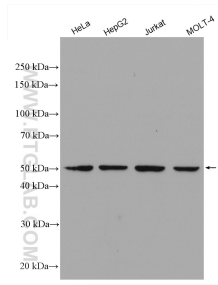
## Storage

**Storage:**  
Store at -20°C. Stable for one year after shipment.  
**Storage Buffer:**  
PBS with 0.02% sodium azide and 50% glycerol pH 7.3.  
Aliquoting is unnecessary for -20°C storage

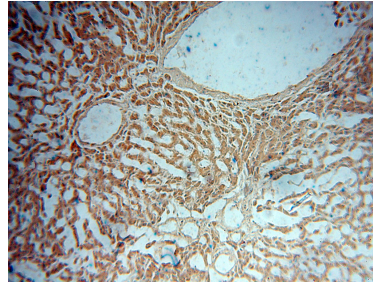
For technical support and original validation data for this product please contact:  
T: 4006900926 E: Proteintech-CN@ptglab.com W: ptgcn.com

This product is exclusively available under Proteintech Group brand and is not available to purchase from any other manufacturer.

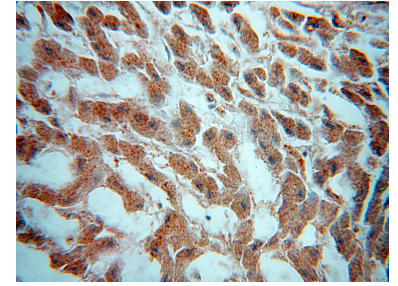
## Selected Validation Data



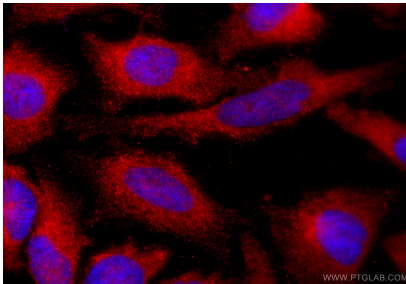
Various lysates were subjected to SDS PAGE followed by western blot with 15639-1-AP (ADPGK antibody) at dilution of 1:1000 incubated at room temperature for 1.5 hours.



Immunohistochemical analysis of paraffin-embedded human liver using 15639-1-AP (ADPGK antibody) at dilution of 1:50 (under 10x lens).



Immunohistochemical analysis of paraffin-embedded human liver using 15639-1-AP (ADPGK antibody) at dilution of 1:50 (under 40x lens).



Immunofluorescent analysis of (-20°C Ethanol) fixed HeLa cells using ADPGK antibody (15639-1-AP) at dilution of 1:200 and CoraLite®594-Conjugated Goat Anti-Rabbit IgG(H+L) (SA00013-4).