

EXOSC5 Polyclonal antibody

Catalog Number: 15627-1-AP **3 Publications**

Basic Information

Catalog Number: 15627-1-AP	GenBank Accession Number: BC007742	Purification Method: Antigen affinity purification
Size: 350 µg/ml	GeneID (NCBI): 56915	Recommended Dilutions: WB 1:500-1:3000
Source: Rabbit	UNIPROT ID: Q9NQ74	IP 0.5-4.0 µg for 1.0-3.0 mg of total protein lysate
Isotype: IgG	Full Name: exosome component 5	IHC 1:20-1:200
Immunogen Catalog Number: AG8098	Calculated MW: 235 aa, 25 kDa	IF 1:350-1:1400
	Observed MW: 28-30 kDa	

Applications

Tested Applications: IF/ICC, IHC, IP, WB, ELISA	Positive Controls: WB : HEK-293 cells, Raji cells, HeLa cells, K-562 cells
Cited Applications: WB, IHC	IP : HeLa cells,
Species Specificity: human, rat	IHC : human breast cancer tissue,
Cited Species: human	IF : MCF-7 cells,

Note-IHC: suggested antigen retrieval with TE buffer pH 9.0; (*) Alternatively, antigen retrieval may be performed with citrate buffer pH 6.0

Background Information

CML28 is a component of the human exosome, which is a multiprotein complex involved in the 3' processing and degradation of RNA [PMID:12359762]. CML28 is a novel 28 kDa TAA identified by serological analysis of cDNA expression libraries (SEREX) screening of a chronic myeloid leukemia (CML) cDNA expression library. As a potential target for tumor-specific immunotherapy, CML28 is superior to other known TAAs characterized by its broader spectrum expression in tumor cells and stricter expression in normal tissues [PMID:16815301].

Notable Publications

Author	Pubmed ID	Journal	Application
Tobias Moll	36241425	Life Sci Alliance	WB
Yujing Zhang	36293016	Int J Mol Sci	IHC
Xiangliu Chen	35371329	J Cancer	WB,IHC

Storage

Storage:
Store at -20°C. Stable for one year after shipment.

Storage Buffer:
PBS with 0.02% sodium azide and 50% glycerol pH 7.3.

Aliquoting is unnecessary for -20°C storage

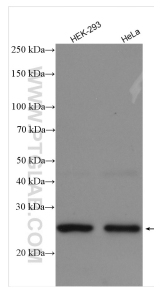
For technical support and original validation data for this product please contact:

T: 4006900926

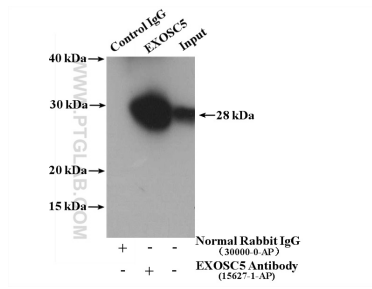
E: Proteintech-CN@ptglab.comW: ptgcn.com

This product is exclusively available under Proteintech Group brand and is not available to purchase from any other manufacturer.

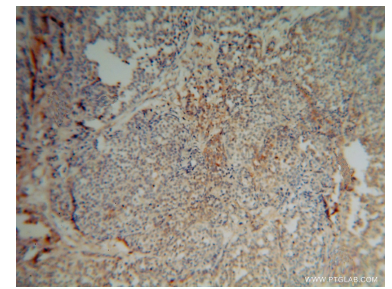
Selected Validation Data



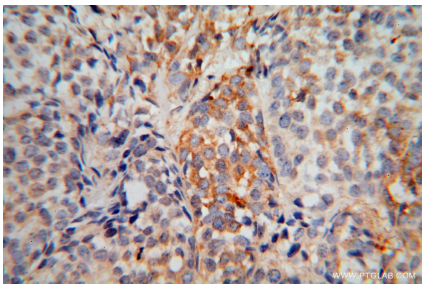
Various lysates were subjected to SDS PAGE followed by western blot with 15627-1-AP (EXOSC5 antibody) at dilution of 1:1500 incubated at room temperature for 1.5 hours.



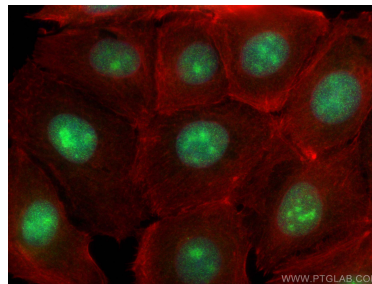
IP result of anti-EXOSC5 (IP:15627-1-AP, 4ug; Detection:15627-1-AP 1:300) with HeLa cells lysate 2800 ug.



Immunohistochemical analysis of paraffin-embedded human breast cancer using 15627-1-AP (EXOSC5 antibody) at dilution of 1:50 (under 10x lens).



Immunohistochemical analysis of paraffin-embedded human breast cancer using 15627-1-AP (EXOSC5 antibody) at dilution of 1:50 (under 40x lens).



Immunofluorescent analysis of (4% PFA) fixed MCF-7 cells using EXOSC5 antibody (15627-1-AP) at dilution of 1:700 and CoraLite@488-Conjugated AffiniPure Goat Anti-Rabbit IgG(H+L), CL594-phalloidin (red).