

For Research Use Only

# AKAP1 Polyclonal antibody, PBS Only

Catalog Number:15618-1-PBS



## Basic Information

<b>Catalog Number:</b> 15618-1-PBS	<b>GenBank Accession Number:</b> BC000729	<b>Purification Method:</b> Antigen affinity purification
<b>Size:</b> 1 mg/ml	<b>GeneID (NCBI):</b> 8165	
<b>Source:</b> Rabbit	<b>UNIPROT ID:</b> Q92667	
<b>Isotype:</b> IgG	<b>Full Name:</b> A kinase (PRKA) anchor protein 1	
<b>Immunogen Catalog Number:</b> AG8037	<b>Calculated MW:</b> 97 kDa	
	<b>Observed MW:</b> 149 kDa	

## Applications

**Tested Applications:**  
WB, IHC, IF/ICC, IP, Indirect ELISA

**Species Specificity:**  
human

## Background Information

AKAP1 (also termed AKAP149) is a human 149 kDa anchoring protein localized in mitochondria and the endoplasmic reticulum/nuclear envelope (ER-NE) network. It binds to type I and II regulatory subunits of protein kinase A and anchors them to the cytoplasmic face of the mitochondrial outer membrane. This protein is speculated to be involved in the cAMP-dependent signal transduction pathway and in directing RNA to a specific cellular compartment.

## Storage

**Storage:**  
Store at -80°C.  
**The product is shipped with ice packs. Upon receipt, store it immediately at -80°C**

**Storage Buffer:**  
PBS Only

For technical support and original validation data for this product please contact:

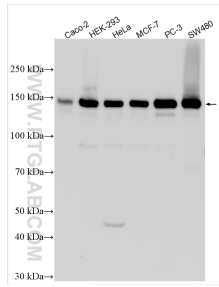
T: 4006900926

E: [Proteintech-CN@ptglab.com](mailto:Proteintech-CN@ptglab.com)

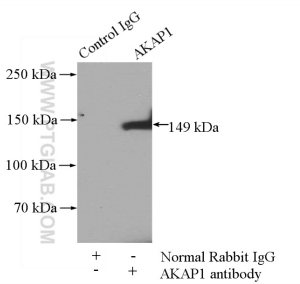
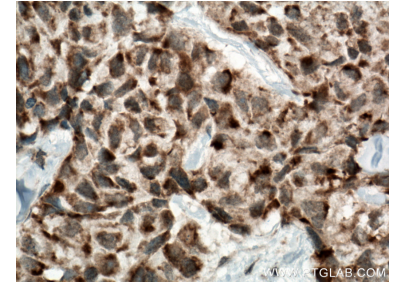
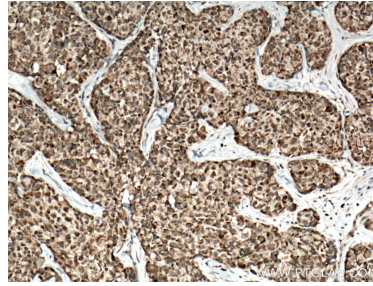
W: [ptgcn.com](http://ptgcn.com)

**This product is exclusively available under Proteintech Group brand and is not available to purchase from any other manufacturer.**

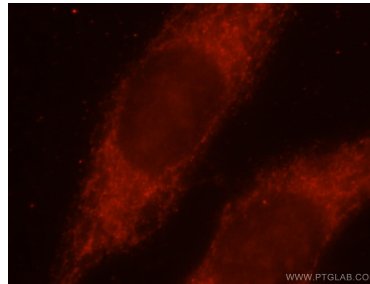
## Selected Validation Data



Various lysates were subjected to SDS PAGE followed by western blot with 15618-1-AP (AKAP1 antibody) at dilution of 1:2000 incubated at room temperature for 1.5 hours. This data was developed using the same antibody clone with 15618-1-PBS in a different storage buffer formulation.



IP result of anti-AKAP1 (IP:15618-1-AP, 4ug; Detection:15618-1-AP 1:2000) with PC-3 cells lysate 1800ug. This data was developed using the same antibody clone with 15618-1-PBS in a different storage buffer formulation.



Immunofluorescent analysis of MCF-7 cells, using AKAP1 antibody 15618-1-AP at 1:25 dilution and Rhodamine-labeled goat anti-rabbit IgG (red). This data was developed using the same antibody clone with 15618-1-PBS in a different storage buffer formulation.