

REXO2 Polyclonal antibody

Catalog Number: 15598-1-AP

Basic Information

Catalog Number:

15598-1-AP

Size:

200 µg/ml

Source:

Rabbit

Isotype:

IgG

Immunogen Catalog Number:

AG7976

GenBank Accession Number:

BC003502

GeneID (NCBI):

25996

UNIPROT ID:

Q9Y3B8

Full Name:

REX2, RNA exonuclease 2 homolog (S. cerevisiae)

Calculated MW:

27 kDa

Observed MW:

27-30 kDa

Purification Method:

Antigen affinity purification

Recommended Dilutions:

WB 1:500-1:1000

IHC 1:20-1:200

Applications

Tested Applications:

IHC, WB, ELISA

Species Specificity:

human, mouse, rat

Note-IHC: suggested antigen retrieval with **TE buffer pH 9.0; (*) Alternatively, antigen retrieval may be performed with citrate buffer pH 6.0**

Positive Controls:

WB : mouse liver tissue, L02 cells

IHC : human placenta tissue, human heart tissue

Background Information

Storage

Storage:

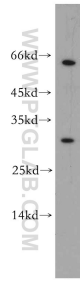
Store at -20°C. Stable for one year after shipment.

Storage Buffer:

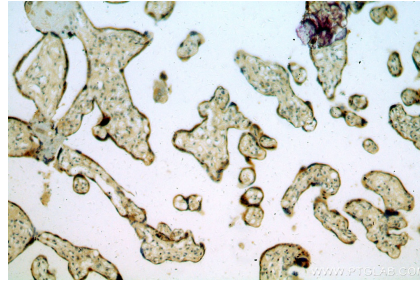
PBS with 0.02% sodium azide and 50% glycerol pH 7.3.

Aliquoting is unnecessary for -20°C storage

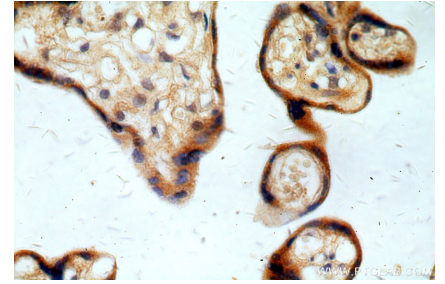
Selected Validation Data



mouse liver tissue were subjected to SDS PAGE followed by western blot with 15598-1-AP (REXO2 antibody) at dilution of 1:300 incubated at room temperature for 1.5 hours.



Immunohistochemical analysis of paraffin-embedded human placenta using 15598-1-AP (REXO2 antibody) at dilution of 1:50 (under 10x lens).



Immunohistochemical analysis of paraffin-embedded human placenta using 15598-1-AP (REXO2 antibody) at dilution of 1:50 (under 40x lens).